



Buchanan Orthotics

PRODUCT CATALOGUE



FIRST EDITION



WELCOME

Welcome to the inaugural edition of the Buchanan Orthotics product catalogue. We are delighted to present our comprehensive range of orthotic solutions designed to enhance mobility and improve quality of life.

For many years, Buchanan Orthotics has been committed to providing high-quality products and exceptional service to clinicians and patients alike. This catalogue represents a significant milestone, showcasing our expanded portfolio, including our established foot and ankle products, knee braces, and paediatric orthotic devices.

We are proud to partner with leading innovators in the orthotic and prosthetic fields, such as Erimed from Sweden, with their renowned Dictus range, and Coyote Prosthetics and Orthotics from the United States. These collaborations enable us to bring you the latest advancements and cutting-edge technologies.

In a first for Buchanan Orthotics, we are proud to introduce a dedicated section featuring orthotic components for the production of Coyote Dynamic AFOs, alongside a wide selection of materials and prosthetic components. This expansion allows us to offer a truly comprehensive solution for your orthotic needs.

We are confident that you will find this catalogue a valuable resource. Our team is dedicated to supporting you with expert advice and assistance. Please do not hesitate to contact us with any enquiries.

Thank you for choosing Buchanan Orthotics.

Buchanan Orthotics is proud to be the UK distributor of Coyote, Dictus and Schein



CONTENTS

FOOT AND ANKLE	1
KNEE	15
HIP	27
UPPER LIMB	35
SPINAL	47
PAEDIATRICS	61
FOOTWEAR	73
PROSTHETICS	79
ORTHOTIC COMPONENTS	101

FOOT AND ANKLE



Dictus Flex

- Fabric Orthosis for the treatment of Foot drop to reduce the risk of tripping/falling
- Ankle wrap with two elastic straps
- Comes with four metal hooks and one clip for between laces
- Shoeless section is available separately

Size	Ankle Circumference	Code
Child	12–17 cm	530400-000
Medium	15–20 cm	530400-011
Large	20–27 cm	530400-021
X-Large	> 26 cm	530400-031



Dictus Original

- Orthosis for the treatment of Foot drop to reduce the risk of tripping/falling
- Fixed band to add security to fit
- Comes with four metal hooks and one clip for between laces
- Shoeless section is available separately

Size	Ankle Circumference	Code
Child	12–17 cm	530200-000
Medium	15–20 cm	530200-011
Large	20–27 cm	530200-021
X-Large	> 26 cm	530200-031



Dictus Spare Parts and Accessories

Dictus Flex and Original Barefoot

Size/Side	Code
Adult Barefoot Right	530300-011
Adult Barefoot Left	530300-111
Child Barefoot	530300-000



Spare Parts

Part	Code
Dictus Original Rubber Band	
Rubber band/single	530100-041
Rubber band 9 mm shorter/single	530100-941
Dictus Flex Elastic straps	
Child/Medium	530100-400
Large/X-Large	530100-440
Spare Parts Flex and Original	
S-hooks/pair	530100-003
Plastic hooks/pair	530100-001
Monohook for Dictus/single	530100-002

Dictus Hip Foot

- Adjustable hip belt
- Elastic rubber band with knee band that is attached to the shoe or foot
- The rubber band assists with hip flexion and foot drop
- Four metal hooks and one clip for between laces
- Can be used over regular clothing or under loose clothing.
- Can be used on one or both legs and is universal.
- Shoeless section available separately

Size	Hip Belt Size	Band Length	Code
Medium	55–80 cm	100 cm	530500-311
Large	80–130 cm	100 cm	530500-321

Indications

- Decreased muscle strength - difficulty flexing/lifting at the hip, knee and foot
- Circumduction due to hip weakness
- Stroke
- MS (Multiple Sclerosis)



Dictus Hip Foot Alternative Bands	Size	Code
Rubber band with knee band for Dictus HIP-Foot	80 cm	530100-080
Rubber band with knee band for Dictus HIP-Foot	100 cm	530100-101
Rubber band with knee band for Dictus HIP-Foot	120 cm	530100-120
Rubber band (no knee band)	100 cm	530100-100

Dictus Hip Foot Spare Parts	Code
S-hooks / pair	530100-003
Dictus BareFoot piece	530300-011
Plastic hooks / pair	530100-001
Monohook for Dictus / pcs	530100-002

Airmed Footlift

- Consists of three separated pieces: an above ankle wrap section, a non-slip insert with a hook to fix between the tongue and shoelaces and an elastic section to attach the two parts to provide foot lift.
- On back part of the strap, there is an inner gel pad for a higher comfort on the Achilles tendon, and the instep area is padded.
- Discrete, flexible, it takes no space on the shoe, being easy to fit. To be used with lacing shoe.
- Its function is to lift the foot during the swing phase of gait

Indications

- Foot Drop

Size	Ankle Circumference	Code
X-Small	13–17 cm	ATX01-XS
Small	17–21 cm	ATX01-S
Medium	21–25 cm	ATX01-M
Large	25–29 cm	ATX01-L

Shoeless Section for Airmed Footlift

- Foot wrap for use with Airmed Footlift (available separately)
- It consists of a foot wrap with hook attachment for the drop foot orthosis to enable its use without footwear or some slip-on shoes / slippers

Size	Ankle Circumference	Code
Small	17–21 cm	ATX11-S
Medium	21–25 cm	ATX11-M
Large	25–29 cm	ATX11-L

Please specify Left or Right when Ordering



AFO Strong

- Soft padding for protection of the tibia and the calf
- Full Foot plate

Indications

- Weakness of dorsiflexion of the foot (drop foot)
- Light to moderate spasticity



Size	Shoe Size	Height	Left	Right
Small	35–39	28 cm	M9051-SL	M9051-SR
Medium	40–43	29 cm	M9051-ML	M9051-MR
Large	41–44	34 cm	M9051-LL	M9051-LR
X-Large	> 44	39 cm	M9051-XLL	M9051-XLR

Matrix

- Energy storing, composite footplate and strut
- Lateral strut is anterior to malleolus
- Open calcaneal design
- Custom-fit, anterior shell and footplate

Indications

- Low activity patients
- Simple, unilateral drop foot
- Maximum weight of 113 kg



Size	Height	Foot Length	Left	Right
Small	39–42 cm / 15.5–16.5 in	< 25 cm / < 9.8 in	FH200L-02	FH200R-02
Medium	41–43 cm / 16–17 in	24–27 cm / 9.4–10.6 in	FH200L-03	FH200R-03
Large	43–46 cm / 17–18 in	25–29 cm / 9.8–11.4 in	FH200L-04	FH200R-04

Matrix Max

- Lightweight, carbon composite frame with enhanced stability
- Reinforced lateral strut that is anterior to malleolus
- Open calcaneal design
- Custom-fit, anterior shell and footplate

Indications

- Low to high activity patients
- Unilateral or bilateral drop foot
- Suitable for partial foot amputations



Size	Height	Foot Length	Left	Right
Small	39–42 cm / 15.5–16.5 in	< 25 cm / < 9.8 in	FH250L-02	FH250R-02
Medium	41–43 cm / 16–17 in	24–27 cm / 9.4–10.6 in	FH250L-03	FH250R-03
Large	43–46 cm / 17–18 in	25–29 cm / 9.8–11.4 in	FH250L-04	FH250R-04
X-Large	43–46 cm / 17–18 in	26–31 cm / 10.2–12.2 in	FH250L-05	FH250R-05

Matrix Pace

- Posterior medial strut of intermediate stiffness for best combination of support, flexibility and energy return
- Ergonomic footplate with curved heel for better foot fitting
- Narrower footplate for greater variety of compatible footwear
- Breathable padded cuff with reverse pull hook and loop compatible strap
- Flexible high strength band that easily conforms around calf muscles.

Indications

- Low to high activity patients with unilateral or bilateral drop foot



Size	Height	Footplate Length	Left	Right
Small	36.5 cm	< 23.6 cm	FH400L02	FH400R-02
Medium	36.5 cm	25 cm	FH400L03	FH400R-03
Large	38.5 cm	26.4 cm	FH400L04	FH400R-04

Malleo Immobile Night

- Universal immobilisation orthosis
- Positions the foot in slight dorsiflexion
- Washable pads and straps
- Universal fits left and right

Indications

- Functional Contractures
- Inflammation of the plantar tendon (plantar fasciitis)
- Tendinopathy
- Irritation of the Achilles tendon



Size	Height	Foot Length	Left	Right
Small	36.5 cm	< 23.6 cm	FH400L02	FH400R02
Medium	36.5 cm	25 cm	FH400L03	FH400R03
Large	38.5 cm	26.4 cm	FH400L04	FH400R04

Malleo Neurexa Pro

- Thermoplastic ankle-foot orthosis with dynamic pronation strap.
- Yields when spasticity occurs
- Returns the foot to the neutral position after relaxation
- Can be used as a day splint
- Dynamic pronation strap
- Corrects supination

Indications

- Drop foot without/with moderate supination of the foot due to spasticity

Size	Left	Right
35–37	28U50=L35–37	28U50=R35–37
37–39	28U50=L37–39	28U50=R37–39
39–41	28U50=L39–41	28U50=R39–41
41–44	28U50=L41–44	28U50=R41–44



Rebound Walker

- Diabetic Walker Boot
- Unique pressure relief valve for preventing over-inflation, while balancing compression with customised fit
- Rocker Bottom outsole for a smooth roll over while allowing for individual natural toe out
- Soft and breathable, low friction, machine washable liner for hygiene promotion and prevention of infection



Indications

- Plantar foot ulcers and wound prevention

Size	UK Shoe	EU Shoe	Code
Small	4–6.5	36–39	B-242500002
Medium	7–10	39.5–44	B-242500003
Large	10.5–12	44.5–46.5	B-242500004
X-Large	12.5–14.5	47–50	B-242500005

Replacement Liners

Size	Liners	Insoles
Small	B-418500102	B-418500202
Medium	B-418500103	B-418500203
Large	B-418500104	B-418500204
X-Large	B-418500105	B-418500205

EvenUP

- Elevated sole designed to offset the imbalance
- Rubber bands to stretch over the shoe
- Facilitates a comfortable recovery.

Indications

- Leg Length Discrepancy

Sizes	UK Shoe	Code
Small	2–7	AUSG-01-2-EN-S
Medium	6.5–9.5	AUSG-01-2-EN-M
Large	9–13	AUSG-01-2-EN-L



ComforSil Bunion Protector

- Hallux valgus corrector with
- Protective silicone pad in the bunion area.
- Made from soft, seamless elastic material with different compression zones.

Indications

- Hallux Valgus
- Bunions

Size	Side	Code
One Size	Left	CC450 739229
One Size	Right	CC450 739278



Elastic ankle Support with Silicone Pad and fig 8 Stabilisers

- Brace equipped with figure-of-eight straps
- Front opening with Velcro fasteners
- Front closure
- Figure-of-eight strap fixed to the sole of the foot with a seam

Indication

- Minor sprains
- Prevention of sprains while playing sport
- Tendinitis

Size	Measurement	Code
Small	20–22 cm	T114-S
Medium	22–24 cm	T114-M
Large	24–26 cm	T114-L
X-Large	26–28 cm	T114-XL



MalleostrongPro

- Thin Breath-o-prene® structure
- Medial and lateral shells
- Additional rear padding for improved comfort
- Rear elastic fastening strap
- Circular, stabilising strap (can be shortened to fit)

Indications

- Inversion Injury
- Post-operative functional recovery
- Functional recovery of consequences of malleolar fractures
- Chronic instability of the tibia-tarsus joint and in sporting activity



Size	Shoe Size (EU)	Left	Right
X- Small	30–34	MA1028-XSL	MA1028-XSR
Small	35–38	MA1028-SL	MA1028-SR
Medium	39–42	MA1028-ML	MA1028-MR
Large	43–47	MA1028-LL	MA1028-LR
X-Large	> 47	MA1028-XLL	MA1028-XLR

Malleo Dynastab BOA

- Slim low profile design
- Fast, easy and reliable BOA tightening system, with lifetime guarantee
- Figure 8 strapping system provides additional lateral reinforcement
- Bilateral fits left and right

Indications

- Ankle Sprain

Size	Ankle Circumference	Code
0	16–19 cm	2351 020
1	19–22 cm	2351 021
2	22–26 cm	2351 022
3	26–30 cm	2351 023



Bilateral Model fits both left and right

Push Aquei

- Rigid support is situated exclusively on the medial side of the ankle
- Recess for the malleolus
- The lateral side is made from preformed foam, which easily adapts to the individual anatomy

Indications

- Serious ankle instability
- Treatment of acute lateral ankle ligament injury
- Follow-up treatment of conservative or operated ankle fractures
- Arthrosis with instability without accumulation of fluid
- Secondary prevention of ankle ligament injury (under high stress without accumulation of fluid)



Size	Short Heel Circumference	Left	Right
1	27–31 cm	POA1-L	POA1-R
2	31–34 cm	POA2-L	POA2-R
3	34–40 cm	POA3-L	POA3-R

APU Prafo

- Articulating Ankle/Foot Orthosis
- Adjustable Posterior Upright
- precise, simplified, and calibrated method of setting the optimal dorsi/plantar flexion angle

Indications

- CVA, TBI, SCI and Diabetic neuropathy
- Post tendo achilles lengthening immobilisation
- Post Botox or serial casting
- Stable fractures of the foot and ankle
- Tendon or ligamentous tear/rupture



Size	Foot length	Calf Height	Calf Circumference	Calf Width	Foot Plate Width	Weight Limit
Adult	6.75" to 12"	12" to 13"	20"	4"	3.75"	113Kg

DynaPro AFO

- Antimicrobial material which helps prevent odour and infection
- Effectively reverses ankle/foot contractures
- Elastic pull straps effectively treat plantar flexion, inversion or eversion
- Non-skid bottom for safer transfers

Size	Foot Length	Max Calf Circ.	Model No
Small	15–20 cm	38 cm	DPAFO-02
Medium	20–25 cm	43 cm	DPAFO-03
Large	25–28 cm	48 cm	DPAFO-04



SoftPro In Bed AFO

- Rotation hip bar located at the top of the AFO which helps to maximise rotation control
- Anterior foot strap maintains heel position in AFO
- Contoured rigid insert calf support to help maintain leg position
- Antimicrobial material which helps prevent odour and infection
- Non-skid base which prevents slipping during transfers



Size	Foot Length	Max Calf Circ.	Model No
Small	15–20 cm	38 cm	SP10S-02
Medium	20–25 cm	43 cm	SP10S-03
Large	25–28 cm	48 cm	SP10S-04
X-Large	28–31 cm	58 cm	SP10S-05
Bariatric (Fleece lining only)	N/A	53–81 cm	SP10S-07

SoftPro Ambulatory AFO

- Indicated for treating plantarflexion contractures at the ankle or to protect the heel from unwanted pressure while in bed.
- Semi-rigid insert that can be positioned to accommodate the angle of the ankle/foot with mild to moderate plantarflexion contractures.
- Covered by a laminated foam/cloth cover that can be laundered as necessary.
- Toe post protects the toes from shear forces on the toes from bed covers during in-bed use.



Indications

- Plantarflexion Contracture
- Heel Offloading
- Hip rotation control

Size	Foot Length	Max Calf Circ	Code
Small	6"-8"	15"	SP 20-00
Medium	18"-10"	17"	SP 20-01
Large	10"-11"	19"	SP 20-02
X-Large	11"-12"	23"	SP 20-03

Available with fleece lining on request

SoftPro Multi Use Boot

Overview

- The Multi use boot can be adjusted by hand to achieve a custom fit in the clinic or bedside
- Adjustable with side adjustment straps to maintain the desired position or stretch
- Provides heel pressure relief as the heel "floats" inside the splint if shaped correctly
- Heel retaining strap and foot cover adjustment strap
- Includes wedge for extra toe stretch

Indications

- Plantarflexion Contracture
- Plantarflexion resistance or for Night time stretch
- Heel Offloading
- Toe Walking
- Plantar Fasciitis
- Calf Tightness

Size	Code
Adult	SPMB-A
Paediatric	SPMB-P



KNEE



Unloader One® X

- 3-Point Leverage System consisting of two Dynamic Force System (DFS) Straps, rigid shells and a single upright hinge contribute to a unicompartamental unloading of the knee joint
- The unloading is effective only when needed, no condyle pressure during sitting or swing phase
- Easily adaptable to individual needs and anatomical shapes

Indications

- Moderate to severe unicompartamental knee osteoarthritis
- Degenerative meniscal tears



Standard

Size	Calf circumference	Left Medial	Right Medial	Left Lateral	Right Lateral
XS-M	25–43 cm	UOX0618713	UOX0518713	UOX0628713	UOX0528713
L-XL	43–62 cm	UOX0618715	UOX0518715	UOX0628715	UOX0528715

Calf Circumference is taken 15 cm below mid patella.

This is recommended for patients with an inseam measurement > 85 cm.

The hinge is placed on the side of the affected compartment.

Short

Size	Calf circumference	Left Medial	Right Medial	Left Lateral	Right Lateral
XS-M	25–43 cm	UOX1618713	UOX1518713	UOX1628713	UOX1528713
L-XL	43–62 cm	UOX1618715	UOX1518715	UOX1628715	UOX1528715

Calf Circumference is taken 15 cm below mid patella.

Recommended for patients with an inseam measurement < 85 cm.

The hinge is placed on the side of the affected compartment

Action Reliever

- Straps create a dynamic 3-point pressure system
- Self-dosing adjustment possible by tightening the front straps
- Medial Left / Lateral Right: choose this option for those with either "left leg medial compartment arthritis" or "right leg lateral compartment arthritis"
- Medial Right / Lateral Left: choose this option for those with either "right leg medial compartment arthritis" or "left leg lateral compartment arthritis"

Indications

- Uni-compartmental Osteoarthritis (lateral or Medial)
- Uni-compartmental (lateral or medial) knee conditions requiring load reduction



Size	Circumference			Codes	
	Thigh	Mid-Patella	Calf	Left Medial/Right Lateral	Right Medial/Left Lateral
1	38–41 cm	32–34 cm	28–31 cm	23490120100151	23490120100152
2	42–45 cm	35–37 cm	32–35 cm	23490120200151	23490120200152
3	45–48 cm	38–41 cm	35–38 cm	23490120300151	23490120300152
4	48–51 cm	42–45 cm	39–42 cm	23490120400151	23490120400152
5	50–53 cm	46–49 cm	41–44 cm	23490120500151	23490120500152
6	53–56 cm	50–53 cm	44–47 cm	23490120600151	23490120600152
7	56–61 cm	53–56 cm	48–51 cm	23490120700151	23490120700152
8	61–66 cm	56–59 cm	51–54 cm	23490120800151	23490120800152

Thigh Circumference 14 cm above mid patella (cm).

Calf circumference 12 cm below mid-patella (cm).

Ortho-A

- Light structure made of foam and aluminium alloy
- Single-sided hinge for improved and effective brace application.
- Lever mechanism to relieve mid-lateral knee
- Included accessories: - Additional condyle pad;
- wedges to limit extension of 0°, 5°, 10°, 15°, 20° or 25° and flexion to 45°, 60°, 75° or 90°

Indications

- Moderate uni-compartmental gonarthrosis
- Uni-compartmental Osteoarthritis (lateral or Medial)



Size	Side	Code
Universal	Left medial / Right Lateral	M91014LEFT
Universal	Right Medial / Left Lateral	M91014RIGHT

Right: for medial offloading of the right knee (varus right knee) or for lateral offloading of the left knee (valgus left knee).

Left: for medial offloading of the left knee (varus left knee) or for lateral offloading of the right knee (valgus right knee).

CTI 3

- Lightweight, high strength carbon composite frames
- Anatomical fit – Designed to fit a wider range of leg shapes and includes an Accutrak® hinge to closely follow the knee's anatomical movement.
- Easy-to-use accessories and replacement parts, including MX kits, replacement strap sets, liner sets and flexion stops.

Indications

- Knee conditions that may benefit from increased AP and ML stability and protection
- Injuries to the ACL, MCL, LCL, PCL, rotary and combined instabilities



Size	Caliper	Circumference	Left	Right
Small	8–10 cm	40–47 cm	CTI-23002	CTI-22002
Medium	10–11 cm	45–55 cm	CTI-23003	CTI-22003
Large	11–13 cm	52–61 cm	CTI-23004	CTI-22004

Includes: Condyle Pad Set and Extension Stop Set, 0° Extension Stop and Standard Condyle Pad are pre-installed.

Note: M/L measurements are the preferred and most accurate form of measurement for CTI. Circumferential measurements are approximate.

Genu Arexa

- Extension and flexion limit easy to adjust without tools
- Auto-adaptive plastic shells
- High stability and torsional stiffness for everyday activities
- Adjustable to ACL, PCL and collateral ligament support

Indications

- Knee pain with severe or complex ligament laxity
- Cruciate ligament tear (rupture)/reconstruction (ACL and/or PCL)
- Post-traumatic and postoperative instability
- Collateral ligament injury



Size	Knee Circumference	15 cm above mid knee	Left	Right
Small	32–37 cm	39–46 cm	50K13=L-S	50K13=R-S
Medium	37–41 cm	46–53 cm	50K13=L-M	50K13=R-M
Large	41–46 cm	53–61 cm	50K13=L-L	50K13=R-L
X-Large	46–50 cm	61–69 cm	50K13=L-XL	50K13=R-XL
XX-Large	50–56 cm	69–79 cm	50K13=L-XXL	50K13=R-XXL

Esense Telescopic ROM

- One size
- Bilateral
- Pads with non-slip coating
- Locking joint at 0, 15 and 30
- No need for tools

Size	Code
Universal	RS-3000w



Genu Neurexa

- Three-point principle, straps with guaranteed tensile strength, range of motion for splints can be limited, and/or continuously variable cross-strap against hyperextension
- Brace splint joints adjustable in 10° increments
- Climate-regulating material
- Front closure
- Machine washable at 40 °C

Indications

- Paresis of leg muscles resulting in hyperextension
- Stroke
- Intervertebral disc prolapse in the lumbar spine
- Peripheral nerve damage



Size	Circumference 15 cm below knee centre	Circumference 15 cm above knee centre	Beige	Black
X-Small	32–35 cm	38–42 cm	8165=XS-9	8165=XS-7
Small	35–38 cm	42–46 cm	8165=S-9	8165=S-7
Medium	38–41 cm	46–50 cm	8165=M-9	8165=M-7
Large	41–44 cm	50–54 cm	8165=L-9	8165=L-7
X-Large	44–48 cm	54–58 cm	8165=XL-9	8165=XL-7

Genu Ligaflex ROM

- Anterior opening for easy applications
- Easy to use Velcro tabs
- Low profile tension buckles
- Genu Ligaflex ROMTool-less hinge with easy to apply flexion and extension stops to restrict range of motion

Indications

- Mild to moderate ligament injuries and instabilities
- Early stage OA
- Meniscus injuries / repair

Size	Knee Circumference	Code
1	32–34 cm	238605/1
2	35–37 cm	238605/2
3	38–41 cm	238605/3
4	42–45 cm	238605/4
5	46–49 cm	238605/5
6	50–53 cm	238605/6



Genu Ligaflex Short Open

- Flexible knitted areas at the popliteal space, patella and thigh
- Semi-rounded straps for easy application
- Aluminium uprights
- TM5 hinge mimics the natural roll and glide motion of the knee
- Aggressive dual tab calf strap improves suspension
- Integrated anti-slip silicone located inside

Size	Knee Circumference	Code
1	32–34 cm	37505/1
2	35–37 cm	37505/2
3	38–41 cm	37505/3
4	42–45 cm	37505/4
5	46–49 cm	37505/5
6	50–53 cm	37505/6



Genu Recurvatum Control Orthosis – D50

- Knee orthosis for control of the Genu Recurvatum.
- Made of 2.5 mm thick aluminum.
- 5 adjustment straps with a removable foam padding.
- The middle strap adjusts to the height of the popliteal hollow acting as a stop.

Indications

- Knee Hyperextension

Size	Measure*	Code
Universal	28 – 54 cm	827262

*Measure taken 10 cm above knee centre



Semi Open Knee with Polycentric Joints

- Pull on with thigh section opening,
- Closed on calf section
- Hinged

Indications

- Bursitis
- Tendinitis
- Arthritis
- Patellar injuries
- Osgood-Schlatter disease
- Chondromalacia patella
- Patellar subluxation
- Post injury and post-surgical treatment

Size	Height	Knee Circumference	Code
Small	33 cm	32–35 cm	T141/S
Medium	33 cm	35–38 cm	T141/M
Large	33 cm	38–41 cm	T141/L
X-Large	33 cm	41–45 cm	T141/XL
XX-Large	33 cm	45–50 cm	T141/XXL



Airtex Pro

- Polycentric joints reinforce the medio-lateral stability of the joint
- Top opening that facilitates placement and adaptation to different morphologies
- Versatile adjustment system, which allows the orthosis to be tailored to the specific stabilization needs of each patient
- Mesh fabric for the protection of the kneecap and the popliteal recess

Indications

- Joint pain
- Osgood-Schlatter
- Chondromalacia
- Collateral or patellofemoral ligament instability

Size	Knee Circumference	Code
Small	32–35 cm	ATX721/S
Medium	35–38 cm	ATX721/M
Large	38–41 cm	ATX721/L
X-Large	41–45 cm	ATX721/XL
XX-Large	45–50 cm	ATX721/XXL



Elastic Knee Support with Silicone Padding

- Integrated non-slip system.
- Anatomical shape
- Soft popliteal area.
- Anatomical patella pad that centres the kneecap,
- Side stabilising stays for greater mediolateral control.

Indications

- Stabilisation and compression after minor knee injuries
- Mild osteoarthritis and arthritis of the knee
- Minor injury and instability
- Proprioceptive stimulation

Size	Calf Circumference	Code
Small	32–35 cm	P701BG/S
Medium	36–39 cm	P701BG/M
Large	40–46 cm	P701BG/L
X-Large	47–52 cm	P701BG/XL



Lenoxhill Hinged Swedish Knee Cage

Overview

- Lightweight, aluminium frame with padded straps
- Prevents hyperextension of knee joint
- Will not protrude above or below knee while seated

Indications

- Knee hyperextension
- Genu recurvatum

Size	Circumference*	Code
Small	28–38 cm / 11–15 in	A24700
Regular	38–53 cm / 15–21 in	A24701

* Measure 10 cm / 4 in above knee centre



Lenox Hill Swedish Knee Cage

Overview

- Lightweight, vinyl coated, aluminium frame
- Moulds easily
- Adjustable, posterior pressure pad
- Permits knee flexion, restricts extension

Indications

- Knee hyperextension
- Genu recurvatum

Size	Circumference*	Code
Small	25–30 cm / 10–12 in	08668-02
Medium	33–35 cm / 13–14 in	08668-03
Large	38–41 cm / 15–16 in	08668-04
X-Large	42–46 cm / 17–18 in	08668-05

* Measure 10 cm / 4 in above knee centre



Push Med Patella Brace

Overview

- Deluxe Patella strap from Push Braces

Indications

- Patello-femoral pain
- Tendinitis
- Jumper's Knee
- Osgood-Schlatter disease
- Partial dislocation

Size	Code
Universal	PUS047B



Patellar strap

Overview

- Wraparound fastening strap for easy individualised adjustment
- Silicone pad that exerts pressure on the patellar tendon
- Bilateral
- Universal size

Indications

- Osgood-Schlatter disease
- Chondromalacia patella
- Patellar tendon tendinitis
- Sporting activities involving forced extension of the knee



Size	Code
Universal	OST232

HIP



Dictus Hip-Knee

Dictus Hip is a versatile orthosis designed for individuals with weak hip flexors, such as those living with Multiple Sclerosis. Its adjustable nature allows for easy customisation, providing immediate feedback on progress without extensive adjustments.' Dictus Hip-Knee consists of a comfortable hip belt and elastic rubber band that is attached to the thigh.

Indications

- Decreased muscle strength - difficulty flexing/ lifting at the hip, knee and foot
- Circumduction due to hip weakness
- Stroke
- MS (Multiple Sclerosis)

Benefits of the Dictus HIP-Knee

- Dictus Hip gives power to the leg in the swing phase and thus a better gait.
- Provides direct feedback on results.
- Can be used over regular clothing or under loose clothing.
- Can be used on one or both legs and is universal.



Dictus HIP-knee Complete Kit

Size	Hip Belt Size	Thigh Size	Band Length	Code
Medium	55–80 cm	30–40 cm	50 cm	530500-011
Large	80–130 cm	40–50 cm	50 cm	530500-02

Dictus Hip Fitting Kit

The Dictus Hip fitting kit contains all the parts you require to trial the Dictus Hip-Foot and Foot-Knee. Consisting of a medium and a large belt, with all band lengths for both the thigh and foot versions. The kit also contains both medium and large thigh sections. The kit is available at a significantly reduced cost over purchasing the components separately.

Can only be purchased once by each centre.

Size	Code
Universal	DICTUSFIT



Dictus HIP-knee components

Dictus HIP Belt Short



Size	Waist Measure	Code
Medium	55–80 cm	530510-011
Large	80–130 cm	530510-021

Dictus Thigh Piece



Size	Thigh Measure	Code
Medium	30–40 cm	530520-011
Large	40–50 cm	530520-021
X-Large	> 50	530520-031

Dictus Hip Braces

Code: 530530-000



Dictus Foot piece

Code: 530300-011



S-Hooks pair

Code: 530100-003



Plastic Hooks pair

Code: 530100-001



Monohook for Dictus

Code: 530100-002



Dictus Rubber band for HIP-Knee

40 cm Code: 530100-040
50 cm Code: 530100-050



Dictus Hip Foot

Dictus Hip-Foot consists of a comfortable hip belt and elastic rubber band with knee band that is attached to the foot part.

The rubber bands assist with hip flexion. The level and pulling direction of the assistance can be easily set according to the user's needs, easy to change the pulling direction of flexion, adduction, inward rotation. If Dictus HIP-Foot is used, the foot inversion can also be corrected.

Indications

- Decreased muscle strength - difficulty flexing/lifting at the hip, knee and foot
- Circumduction due to hip weakness
- Stroke
- MS (Multiple Sclerosis)

Benefits of the Dictus HIP-foot

- Dictus Hip gives power to the leg in the swing phase and thus a better gait.
- Provides direct feedback on results.
- Can be used over regular clothing or under loose clothing.
- Can be used on one or both legs and is universal.



Dictus HIP-foot Complete

Size	Hip Belt Size	Band Length	Code
Medium	55–80 cm	100 cm	530500-311
Large	80–130 cm	100 cm	530500-321

Dictus Hip Foot Alternative Bands

Size	Code
Rubber band with knee band for Dictus HIP-Foot	
80 cm	530100-080
100 cm	530100-101
120 cm	530100-120
Rubber band (no knee band)	
100 cm	530100-100

Dictus Hip Foot Spare Parts

Part	Code
S-hooks (pair)	530100-003
Dictus BareFoot piece	530300-011
Plastic hooks (pair)	530100-001
Monohook for Dictus pieces	530100-002

Rebound Hip

- Low-profile, lightweight design that supports patient comfort and compliance
- Quick-release pegs easily adjust the desired range-of-motion needed for the patient's optimal rehab
- Quick-fit with sliding mechanism on frame to adjust for patient's height
- Optional, adjustable ROM hinge enables adduction/abduction from 0° to 10°, 20° or 30°

Indications

- Postoperative after (total) hip arthroplasty
- Postoperative after revision of (total) hip arthroplasty
- Postoperative hip arthroscopy
- Post-op following FAI arthroscopic surgery
- Post-op following gluteus medius repair surgery
- Post-op following hamstring repair surgery
- Inoperable hip abnormalities
- Preventively when there is risk of hip dislocation
- Conventional treatment after dislocation/reduction

Universal size up to 122 cm hip circumference

Version	Left	Right
Rebound Hip	980130RB	980135RB
with adjustable hinge	980120RB	980125RB



Hernix 42 – Male hernia containment briefs

- Hypoallergenic, thin, soft and comfortable cotton fabric structure adapted for boxer
- Reinforced and shaped inner structure
- Under-thigh inner pullers, with calibrated traction
- Closed and shaped front, lined with soft cotton jersey
- Fitted for hernia pads (M24699M)
- Two M24699M male hernia pads included.
Additional pads are available to be purchased separately



Indications

- Containment for starting hernias and reducible inguinal hernias
- Pre-op (with the insertion of hernia compression pads)
- Post-op
- Recurrence prevention

Size	Pelvic Circumference	Code
1	83–87 cm	M246421
2	88–92 cm	M246422
3	93–97 cm	M246423
4	98–103 cm	M246424
5	104–109 cm	M246425
6	110–115 cm	M246426
7	116–122 cm	M246427
8	123–130 cm	M246428

Hernix 49 – Male hernia boxer briefs

- Hypoallergenic, thin, soft and comfortable cotton fabric structure adapted for boxer
- Reinforced and shaped inner structure
- Under-thigh inner pullers, with calibrated traction
- Closed and shaped front, lined with soft cotton jersey
- Fitted for hernia pads (M24699M)
- Two M24699M male hernia pads included.
Additional pads are available to be purchased separately.



Indications

- Containment for starting hernias and reducible inguinal hernias
- Pre-op (with the insertion of hernia compression pads)
- Post-op
- Recurrence prevention

Size	Pelvic Circumference	Code
1	83–87 cm	M246491
2	88–92 cm	M246492
3	93–97 cm	M246493
4	98–103 cm	M246494
5	104–109 cm	M246495
6	110–115 cm	M246496
7	116–122 cm	M246497
8	123–130 cm	M246498

Hernix 90 – Female Hernia Brief

- Very supportive, hypoallergenic, soft and comfortable cotton fabric structure.
- Reinforced and shaped internal structure for correct support of the abdominal wall
- Soft finishing on the leg area for maximum comfort
- Fitted for hernia pads (M24699W)
- Two M24699W female hernia pads included. Additional pads available to be purchased separately
- Gusset opening

Indications

- Inguinal hernias, ptosis, and prolapse containment
- Post-op
- Hernia recurrence prevention



Size	Pelvic Circumference	Code
1	83–87 cm	M246901
2	88–92 cm	M246902
3	93–97 cm	M246903
4	98–103 cm	M246904
5	104–109 cm	M246905
6	110–115 cm	M246906
7	116–122 cm	M246907
8	123–130 cm	M246908

UPPER LIMB



Shoulder Brace Light

- Relief of back and neck pain
- Lightweight and convenient construction
- Breathable, hypoallergenic, elastic material
- Provides posture support
- Improved posture leads to reduction in pain
- Ergonomic construction in antimicrobial non latex material

Indications

- Postural kyphosis
- Back-musculature pain related to the work posture

Size	Circumference*	Codes
Small	60–70 cm	20105S
Medium	70–80 cm	20105M
Large	80–90 cm	20105L
X-Large	90–100 cm	20105XL

*Measured just below breast



Omo Neurexa plus

- Special orthosis design permits re-alignment of the humeral head
- Forearm and shoulder sections with silicone strips on the inside
- Various lengths of traction elements included in scope of delivery
- Can be combined with the 28P30 Manu Neurexa plus without using tools - Improved effect

Indications

Flaccid and painful restriction of movement in the shoulder and arm musculature

- Hemiparesis
- Plexus injury (lesion)
- Peripheral nerve damage to the cervical spine
- Neurological subluxation of the shoulder



Size	Chest circumference	Left	Right
XX-Small	73–78 cm	5065N=L-XXS-7	5065N=R-XXS-7
X-Small	79–86 cm	5065N=L-XS-7	5065N=R-XS-7
Small	87–94 cm	5065N=L-S-7	5065N=R-S-7
Medium	96–102 cm	5065N=L-M-7	5065N=R-M-7
Large	103–110 cm	5065N=L-L-7	5065N=R-L-7
X-Large	111–118 cm	5065N=L-XL-7	5065N=R-XL-7

Humerus Comfort

- Wide circular bands, which together with the moulded plastic frame, a perfect distribution of compression and a correct unload is provided
- Soft and comfortable and its textile development over the shoulder warrants a correct and safe positioning
- Plastic frame can easily be removed to cut or to mould it again

Indications

- Non surgical treatment of the closed diaphysary fractures of the humerus
- Post-surgical treatment in open shaft of the humerus
- After inner/outer fixation



Size	Proximal Circumference	Length	Code
X-Small	14-20 cm	22.5 cm	HEMISAFE-XS
Small	17-23 cm	26.5 cm	HEMISAFE-S
Medium	23-32 cm	28.5 cm	HEMISAFE-M
Medium/Large	23-32 cm	30.5 cm	HEMISAFE-ML
Large	32-41 cm	30.5 cm	HEMISAFE-L
X-Large	41-50 cm	32.5 cm	HEMISAFE-XL

HumereX Shoulder Brace

- Bi-valve humerus orthosis made from high-density polyethylene
- Breathable and skin-friendly lining in technical fabric for a modern look.
- Comprises two thermoplastic valves integrated into the lining, which can be removed and thermoformed* to achieve a perfect anatomical fit for the patient.
- Adjusts with 3 humeral velour straps threaded through 3 butterfly buckles
- Valves and straps stabilise the humerus by applying customised uniform compression to the surrounding soft tissues.
- The Y-traction System uses a traction device to increase and adjust the tension.
- Bilateral



Indications

- Humeral Fractures
- Post Operative Use

Short

Size	Proximal Circumference	Length Of Orthosis	Code
Small	16-26 cm	25 cm	EVOH300-S-S
Medium	26-34 cm	27 cm	EVOH300-S-M
Large	34-42 cm	29 cm	EVOH300-S-L
X-Large	42-50 cm	32 cm	EVOH300-S-XL

Long

Size	Proximal Circumference	Length Of Orthosis	Code
Small	16-26 cm	30 cm	EVOH300-L-S
Medium	26-34 cm	32 cm	EVOH300-L-M
Large	34-42 cm	34 cm	EVOH300-L-L
X-Large	42-50 cm	36 cm	EVOH300-L-XL

Airtex Epicondylitis strap

- Breathable
- Elastic
- Foam pad that exerts pressure on the epicondyle
- Bilateral can be used on either arm

Indications

- Epicondylitis



Size	Code
Universal and Bilateral	OST272

Long Wrist Brace with Metal Strips

- Firm support and relieves the carpometacarpal joints
- 1 malleable aluminium palm splint
- 4 medial-lateral plates anatomically shaped
- Made from three-layer velour to provide lightness, softness and comfort

Size	Wrist Circ.	Left	Right
Small	14–18 cm	AM204GLS	AM204GRS
Large	18–22 cm	AM204GLL	AM204GRL



Thumb Immobiliser Accessory AirMED

- Can be placed on braces model AM204G (not included)
- Thumb support

Size	Code
One size	AM201

Wrist Brace not included, and needs ordered separately



Functional Hand Orthosis

- Designed in breathable fabric for the treatment of moderate contractures of the wrist, hand and fingers
- Provide joint alignment and immobilization of the wrist, hand and fingers in a functional position and thumb opposition
- Ability to vary the positioning angle

Indications

- Contracture in flexion or hyperextension of the wrist, including contracted fist
- Contracture of the hand with or without radial or ulnar deviations of the hand
- Contractures in flexion or hyperextension of the interphalangeal articulations including thumb abduction
- Rheumatoid arthritis

Size	Palm width	Left	Right
Small	5.5–7 cm	934SL	934SR
Medium	7–8.5 cm	934ML	934MR
Large	8.5–10.5 cm	934LL	934LR



Positional Hand Orthosis

- Designed in breathable fabric for the treatment of moderate contractures of the wrist, hand and fingers
- Provides joint alignment and immobilisation of the wrist, hand and fingers in a functional position and thumb opposition
- Ability to vary the positioning angle

Indications

- Contracture in flexion or hyperextension of the wrist, including contracted fist
- Contracture of the hand with or without radial or ulnar deviations of the hand
- Contractures in flexion or hyperextension of the interphalangeal articulations including thumb abduction
- Rheumatoid arthritis

Size	Palm width	Right	Left
Small	5.5–7 cm	935SR	935SL
Medium	7–8.5 cm	935MR	935ML
Large	8.5–10.5 cm	935LR	935LL



Wrist and thumb support

- Wraparound fastening strap for easy individualised adjustment
- Highly-elastic and breathable technical impact fabric that adapts to the dynamics of movement, providing the patient with total comfort
- Improves proprioceptive joint function
- One size
- Right and left models

Indications

- Post traumatic joint synovitis of the radius after cast immobilisation
- Thumb osteoarthritis

Size	Left	Right
Universal	OST264-L	OST264-R



Thumb Wrist Brace ATxos

Description

- Wrap-around design
- Stabilises the trapeziometacarpal joint and wrist
- Maintains thumb abduction and hand functionality.
- Fasteners can be individually adjusted to regulate compression.
- Fits left or right

Indications

- Arthritis
- Post Surgical use
- Tendonitis

Size	Wrist Circumference	Code
Universal	14–20 cm	ATXOS100



SoftPro™ Palmar Resting Hand

- Designed in breathable Antimicrobial material which helps to prevent odour and infection
- Severely abducted thumb rests on the finger platform
- The thumb can be positioned under the finger platform as a second step in abducting the thumb
- Large finger platforms provide a comfortable 'pan' to support and protect the hand and fingers
- Colour coded straps to facilitate easy brace application
- An extra cover is included with every SoftPro™ wrist/hand/finger Orthosis

Indications

- RA-pain
- Inflammation
- Deformity
- RSD-pain with movement or stretch
- Tissue shortening
- Mild tone
- Inadequate end feel and compromised skin integrity.



Size	Width of MP Joints	Length - wrist to finger tip	Left	Right
Small	Up to 8 cm	Up to 17 cm	SP31FPRL-02	SP31FPRR-02
Medium	8–9 cm	17–20 cm	SP31FPRL-03	SP31FPRR-03
Large	9–10 cm	20–24 cm	SP31FPRL-04	SP31FPRR-04

SoftPro™ Champ Resting Hand

- Comfortably supports and positions the wrist/hand/fingers in a functional alignment
- The unique colour coded strapping system provides optimal support
- The thumb rest is 'bend to fit', which allows more flexibility when choosing how to support, position or correct alignment of the thumb
- Antimicrobial material which helps to prevent odour and infection
- An extra cover is included

Indications

- RA-Pain
- Inflammation
- Deformity
- RSD-pain with movement or stretch
- Tissue shortening
- Mild tone
- Poor end feel
- Poor skin integrity



Size	Width of MP Joints	Length - wrist to finger tip	Left	Right
X-Small	6–7 cm	11–14 cm	SP31CHAL-01	SP31CHAR-01
Small	7–8 cm	14–17 cm	SP31CHAL-02	SP31CHAR-02
Medium	8–9 cm	17–20 cm	SP31CHAL-03	SP31CHAR-03
Large	9–10 cm	20–24 cm	SP31CHAL-04	SP31CHAR-04

Airpro GRIP WHFO

- Antimicrobial material which helps to prevent odour and infection
- Conforms to the shape of the hand, accommodating different degrees of finger contracture
- The removable cone shaped palmer air bladder can be used independently of a wrist support
- The colour coded straps facilitate easy application of the brace

Indications

- Tissue shortening
- Mild tone
- Fair to good end feel

Size	Left	Right
Universal	AP231AG -L	AP231AG -R



DynaPro™ Flex Hand

- Reverses moderate/severe flexion and/or spasticity of wrist/hand/fingers
- Two incremental larger palmer rolls included to gradually increase extension of the MCP and PIP joints
- Provides gentle ulnar drift correction
- Heat mouldable/adjustable
- Antimicrobial material which helps to prevent odour and infection
- Colour coded straps to facilitate easy application of the brace
- Extra cover included

Indications

- Tissue shortening
- Fair to good end feel
- Mild to severe tone

Size	Left	Right
Universal	DPWF20721-L	DPWF20721-R



DynaPro™ Finger Flex

- A dynamic resting hand designed with a flexible finger platform
- Flexible wrist, MCP and PIP joints
- Thumb socket with two gel inserts to help treat thumb abduction
- Finger separators included
- Heat mouldable/adjustable
- Antimicrobial material which helps to prevent odour and infection
- Colour coded straps to help with easy application of the brace
- Extra cover included

Indications

- Tissue shortening
- Mild to severe tone
- Neurological hypertonicity/spasticity
- Contracture management

Size	Width of MP Joints	Length - wrist to finger tip	Left	Right
Small	Up to 8 cm	Up to 17 cm	DPWFFL-02	DPWFFR-02
Medium	8–9 cm	17–20 cm	DPWFFL-03	DPWFFR-03
Large	9–10 cm	20–24 cm	DPWFFL-04	DPWFFR-04



DynaPro™ Resting Hand (Thumb Ease)

- Resting hand designed with a rigid finger platform
- Thumb pocket with 2 gel inserts to help treat thumb abduction
- Flexible wrist minimises spastic episodes
- Maintains functional hand alignment
- Heat mouldable/adjustable
- Antimicrobial material which helps prevent odour and infection
- Colour coded straps facilitate easy brace application
- Extra covers included



Indications

- Tissue shortening
- Mild to severe tone to good end feel
- Neurological hypertonicity/spasticity
- Contracture management

Size	Width of MP Joints	Length – wrist to finger tip	Left	Right
Small	Up to 8 cm	Up to 17 cm	DPWR20737-02L	DPWR20737-02R
Medium	8–9 cm	17–20 cm	DPWR20737-03L	DPWR20737-03R
Large	9–10 cm	20–24 cm	DPWR20737-04L	DPWR20737-04R

Finger Extensor Splint

Characteristics

- Dynamic splint for extension of the proximal interphalangeal joint
- Helps to immobilize the joint relieving flexor tendon injury



Indications

- Flexor tendon injury

Size	Length Range	Width Range	Code
X-Small	5–6.3 cm	1.3–2.3 cm	PSL180-XS
Small	6.3–7.6 cm	1.3–2.3 cm	PSL180-S
Medium	7.6–8.9 cm	1.3–2.3 cm	PSL180-M
Large	8.9–10.2 cm	1.3–2.3 cm	PSL180-L

SPINAL



Handzon Max

- Lumbar sacral support designed for patients with poor hand strength, which features easier to control closing function.
- Based upon the extremely popular original Handzon Belt, this new variation incorporates 4 additional, easy to use crossover elastic back straps offer good support and comfortable fit
- Standard Depth is 35.5 cm / 14"



Size	Hip Circumference	Code
Small	74–82 cm	HZONMax-S
Medium	82–92 cm	HZONMax-M
Large	93–102 cm	HZONMax-L
X-Large	102–113 cm	HZONMax-XL
XX-Large	113–122 cm	HZONMax-XXL

Handzon Belt

- Lumbar sacral support designed for patients with poor hand strength, which features easier to control closing function.
- Crossover elastic back straps offer good support and comfortable fit.
- Standard depth is 25 cm / 10"



Size	Hip Circumference	Option 1 Code	Option 2 Code
Small	74–82 cm	HZON-S	HZON-S-2
Medium	82–92 cm	HZON-M	HZON-M-2
Large	93–102 cm	HZON-L	HZON-L-2
X-Large	102 – 113 cm	HZON-XL	HZON-XL-2
XX-Large	113 –122 cm	HZON-XXL	HZON-XXL

Additional information

Option 1- With Posterior Boning (standard)

Option 2- With Posterior Steel

Litecross90

- Structure in Sensitive® fabric, elastic, breathable, ladder-proof and antistatic
- Elastic straps for variable and personalised support
- 4 posterior guides for insertion of rigid reinforced stays (optional) to replace the ones provided
- The abdominal section is reinforced by spiral stays fixed in an oblique position

Indications

- Lumbago
- Sciatic lumbalgia and lumbar cruralgia
- Spondylarthrosis and lumbar discopathies
- Slight traumas to the lumbosacral column and paravertebral lumbar
- Post-operative recovery



Size	Pelvic Circumference	Front Height	Back Height	Code
X-Small	70–80 cm	19 cm	28 cm	M1090HXS
Small	80–90 cm	19 cm	28 cm	M1090HS
Medium	90–100 cm	19 cm	28 cm	M1090HM
Large	100–110 cm	19 cm	28 cm	M1090HL
X-Large	110–120 cm	19 cm	28 cm	M1090HXL
XX-Large	120–130 cm	19 cm	28 cm	M1090HXXL

flex-B

- Made of CarbonTrace, a stretchy, breathable, ladder proof, antistatic and bacteriostatic fabric reinforced with carbon fibre
- Adjustable-length shoulder straps with non-release Velcro® fastenings; padded straps
- The elasticated rear panel of the shoulder straps can be positioned at any height
- Abdominal elastic straps provide variable support for a custom fit
- The abdominal section is reinforced with angled spiral stays
- Mouldable inner frame in aluminium alloy, X-ray permeable

Indications

- Back pain caused by arthrosis or kyphosis
- Recovery from fractures of the thoracic and/ or upper lumbar vertebrae
- Management of thoracic vertebral compression fractures caused by osteoporosis or metastasis



Size	Pelvic Circumference	Front Height	Back Height	Code
X-Small	70–80 cm	16 cm	50 cm	M33009XS
Small	80–90 cm	16 cm	50 cm	M33009S
Medium	90–100 cm	16 cm	50 cm	M33009M
Large	100–110 cm	16 cm	52 cm	M33009L
X-Large	110–120 cm	16 cm	52 cm	M33009XL
XX-Large	120–130 cm	16 cm	52 cm	M33009XXL

Semi-rigid Cervical Collar

- Precise anatomic shape
- Reinforced construction with a polyethylene insert
- Comfortable moderate level support
- Stabilises cervical vertebrae
- Cotton lining and rounded edges
- 8 cm and 10 cm deep



Size	Neck Circumference	Height	Code
Medium Shallow Depth	27–36 cm	8 cm	30204 M1
Large Shallow Depth	36–46 cm	8 cm	30204 L1
Medium Standard Depth	27–36 cm	10 cm	30204 M2
Large Standard Depth	36–46 cm	10 cm	30204 L2

Chest/Abdominal Wall Brace

- Supports the abdominal or thoracic area
- Stable construction based on overlapping straps
- 2 stabilising plastic stays
- Ventral height: 20 cm – 30 cm
- Breathable, hypoallergenic, elastic material

Size	Waist Circumference	Code
Small	66–78 cm	10505S
Medium	78–90 cm	10505M
Large	90–105 cm	10505L
X-Large	105–120 cm	10505XL
XX-Large	120–135 cm	10505XXL



Miami J Select

- Wide range of height adjustability
- Universal sizing design
- Locking mechanism to encourage patient compliance
- Anti-microbial Sorbatex padding

Indications

- Immobilisation of the cervical spine
- Pre and post cervical spine surgery
- Cervical spine precaution in trauma patients

Item	Code
Miami J Select Collar	MJS-101
Collar set	MJSR-101
Miami J Select Replacement Pads	MJSP-101



Optima Semirigid Sacrolumbar Back Support System

- Dual straps for optimum immobilisation and comfort
- Flexible, lightweight design promotes comfort even when sitting down
- Hand loops: for easier fitting and adjustment
- 4 steel lumbar stays to ensure containment
- Includes lumbar plate for greater immobilization
- Seamless manufacture



Indications

- Lumbago
- Lumbosciatic
- Lumbocruralgia
- Discartrosis
- Disc disease
- Osteoporosis
- Osteomalacia
- Postoperative disk herniation

Size	Hip Circumference	Height Front	Height Back	Code
X-Small	75–82 cm	16 cm	26 cm	995GXS
Small	82–90 cm	16 cm	26 cm	995GS
Medium	90–100 cm	16 cm	26 cm	995GM
Large	100–110 cm	16 cm	26 cm	995GL
X-Large	110–120 cm	16 cm	26 cm	995GXL
XX-Large	120–130 cm	16 cm	26 cm	9995GXXL

Linea G

- Semi rigid corset with integrated flexible stays supporting the lumbar area.
- Back height of the corset, 35 cm
- Front Height of corset 21 cm
- System of elastic straps placed in a diamond arrangement follows the muscles of the back
- Finger loops to aid tightening

Indications

- Severe spondyloarthritis and lumbar scoliosis
- Fracture of lumbar vertebra
- Low back pain
- Vertebral collapse of osteoporotic or metastatic origin
- Discitis and spondylodiscitis
- Postoperative care



Size	Hip Circumference	Code
X-Small	70–80 cm	TO1204XS
Small	80–90 cm	TO1204S
Medium	90–100 cm	TO1204M
Large	100–110 cm	TO1204L
X-Large	110–120 cm	TO1204XL
XX-Large	120–130 cm	TO1204XXL
XXX-Large	130–140 cm	TO1204XXXL

Sleeq Max

- Patented InvisAdjust universal sizing technology
- Rigid tri-planar control
- Steel sternal bar assembly
- Easy to apply & wear
- Full-circumference shell design
- Steps down to LSO to accommodate patient recovery

Indications

- Moderate to severe sagittal and coronal transverse plane motion restriction
- Increased intracavitary pressure to reduce spine and disc loading
- Mechanical or discogenic thoracic lumbar and extremity pain
- Post-operative spinal stabilization fusion
- Degenerative disc disease
- Post-injury to facilitate healing
- Spondylolysis / spinal stenosis
- Spondylosis, laminectomy
- Discectomy



Sleeq Max TLSO

Size	Code
Universal	U50401007001

Sleeq Max extension panel

Size	Code
Universal	UU50401007001

Fast-Wrap Thoracolumbar Support

- Compression and stabilisation of thoracic, lumbar, sacral and abdominal regions
- Lower cinch straps adjust level of support
- Padded, adjustable shoulder straps
- Contoured, posterior 43 cm / 17 in steel stays provide additional support
- Back Height: 53 cm / 21 in
- Front Height: 18 cm / 7 in

Indications

- Back sprains/strains
- Osteoarthritis
- Mild osteoporosis
- Posture control



Size	Hip Circumference	Code
Small	81–91 cm / 32–36 in	00780-02
Medium	97–107 cm / 38–42 in	00780-03
Large	112–122 cm / 44–48 in	00780-04
X-Large	127–132 cm / 50–52 in	00780-05
XX-Large	137–142 cm / 54–56 in	00780-06

Somi Orthosis

- Sternal Occipital Mandibular Immobilizer
- Immobilises head in practitioner specified position
- Removable chin support
- Allows patient to lie flat
- Easy to fit in supine position

Indications

- C4/5–T3/4 stable fractures
- Post-operative stabilization



Size	Height	Patient Height	Code
Small	20–30 cm / 8–12 in	< 140 cm / < 4 ft 7 in	08005-02
Regular	28–38 cm / 11–15 in	> 140 cm / > 4 ft 7 in	08005-04

DynaPro™ Torticollis Orthosis

- Treats lateral flexion of the head and neck
- Bend to fit shoulder cuff which allows for quick and easy customisation for creating a tailored product for the patient
- Semi-rigid heat mouldable upright with 'flex' technology, which allows for a gentle stretch to reverse tissue shortening or manage lateral cervical flexion spasticity

Indications

- Tissue shortening
- Torticollis



Size	Top of Head to Shoulder measure	Aspect	Code
Adult Large	18–23 cm (7"–9")	Left	DPTO-AL
Adult Large	18–23 cm (7"–9")	Right	DPTO-AR
Adult Regular	15–18 cm (6"–7")	Left	DPTO-RL
Adult Regular	15–18 cm (6"–7")	Right	DPTO-RR
Youth	13–15 cm (5"–6")	Left	DPTO-YL
Youth	13–15 cm (5"–6")	Right	DPTO-YR
Child	10–13 cm (4"–5")	Left	DPTO-CL
Child	10–13 cm (4"–5")	Right	DPTO-CR

T39 and T39S Hyperextension Orthosis

- Limits anterior, posterior and lateral movements
- Continuous adjustment of sternal, lateral and pelvic padded plates for better fit
- Adjustable articulating pelvic band
- Adjustable height and width
- Swivel sternal pad
- Posterior pad may be used horizontally or vertically
- Latch-lock clamp closure allows ease of donning and doffing
- Available in regular (T39) and short version (T39S)

Indications

- Vertebral compression fractures
- Osteoporosis
- Vertebral arthritis
- Post-surgical support



Size	Hip Circumference	Pelvic Band Length	Product Height	Model No.
Regular				
SM/MD	76–94 cm / 30–37 in	43–48 cm / 17–19 in	43–50 cm / 17–19.5 in	T39-02
LG/XL	94–114 cm / 37–45 in	53–59 cm / 21–23.5 in	50–60 cm / 19.5–23.5 in	T39-04
Short				
SM/MD	76–94 cm / 30–37 in	43–48 cm / 17–19 in	39–43 cm / 15–17 in	T39S-02
LG/XL	94–114 cm / 37–45 in	53–59 cm / 21–23.5 in	43–50 cm / 17–19.5 in	T39S-04

Hensinger Head Support

- Foam wrap-around collar supports the head
- The Hensinger Head Support can be used with a chest support
- Maintains mid-line head position to improve breathing, swallowing and feeding
- Waterproof foam coated in flexible plastic
- Made with a strong yet pliable reinforcement material around the outside of the support
- Removable covers which are washable
- One strap quick release buckle allows easy on/off



Size	Neck Circumference	Collar Depth*	Unmounted Code
X-Small	25 cm	25 mm	60816000010
Small	30 cm	38 mm	60816000011
Medium	38 cm	50 mm	60816000012
Large	43 cm	64 mm	60816000013

*Ensure an allowance of 12mm between the earlobe and the top of the support

Replacement Straps

Size	Code
Small HENSINGER replacement strap	60818000011
Medium HENSINGER replacement strap	60818000012
Large HENSINGER replacement strap	60818000013

Anterior Head Support

- It provides firm but gentle lifting of the chin and lateral support of the head.
- There is a padded roll around the rear strap for a comfortable finish.
- Soft cloth covers are included over the vinyl-coated foam.
- This headrest is an important alternative to help meet the positioning needs of those who require some supplemental support.
- Can also be used with a chest support. Vinyl-covered foam is Casa Tan and standard cover colour is Blue.



Size	Neck Circ.	Shoulder to Bottom of Ear*
X-Small	20–25.4 cm	3.8 – 5 cm
Small	23–30.5 cm	5–7.6 cm
Medium	28–35.5 cm	6 – 10 cm
Large	33–43 cm	9 – 13 cm

* allowing 2.5 cm between earlobe and top of head support.
Measurements in inches.

Head Float

Independence for everyone in an aquatic setting makes this a truly valuable aid.

- Constructed from Ensolite® marine flotation foam, the Head Float will not sink or absorb water, even if cut or punctured.
- Therapy is made easier for individuals with reflex domination, and there is no need to support the head manually, so hands are free.
- Superb cushioning design allows the head to rest without pressure on the spinal column, encouraging neutral positioning.

Size	Weight	Dimensions	Code
Small	9–13.5kg	16"L x 12"W x 1.5"T	8725-S
Medium	18–38.5kg	20"L x 13"W x 2"T	8725-M
Large	27–79kg	22"L x 14"W x 3"T	8725-L



Neck circumference

Medium - 13", and Large - 15"

PAEDIATRICS



Hensinger Head Support

- Foam wrap-around collar supports the head
- The Hensinger Head Support can be used with a chest support
- Maintains mid-line head position to improve breathing, swallowing and feeding
- Waterproof foam coated in flexible plastic
- Made with a strong yet pliable reinforcement material around the outside of the support
- Available: Mounted on back plate for seating units, with mount bar for tumble forms seat or unmounted
- Removable covers which are washable



Size	Neck Circumference	Collar Depth*	Unmounted Code
X-Small	25 cm	25mm	6810XS
Small	30 cm	38mm	6810S
Medium	38 cm	50mm	6810M
Large	43 cm	64mm	6810L

*Ensure an allowance of 12mm between earlobe and the top of the support

Anterior Head Support

- It provides firm but gentle lifting of the chin and lateral support of the head.
- There is a padded roll around the rear strap for a comfortable finish.
- Soft cloth covers are included over the vinyl-coated foam.
- This headrest is an important alternative to help meet the positioning needs of those who require some supplemental support.
- Can also be used with a chest support. Vinyl-covered foam is Casa Tan and standard cover colour is Blue.



Size	Neck Circumference	Shoulder to Bottom of Ear*	Unmounted Code
X-Small	8–10"	1.5–2"	6826XS
Small	9–12"	2–3"	6826S
Medium	11–14"	2.5–4"	6826M
Large	13–17"	3.5–5"	6826L

* allowing 1" between earlobe and top of head support. Measurements in inches.

Head Collar Accessories

Replacement Straps for Hensinger Collar

Size	Code
Small HENSINGER replacement strap	7902S
Medium HENSINGER replacement strap	7902M
Large HENSINGER replacement strap	7902L



Size Reducers for Hensinger Collars

- Available in Narrow and Wide suitable for the Head Support Collars
- XS S use the Narrow Reducer
- L XL use Wide this will also add approx. 1/4inch to the height at the rear of the collar.

Collar Size	Reducer size
X-Small	6821NXS
Small	6821NS
Medium	6821WM
Large	6821WL
X-Large	6821WXL

Replacement Lycra Covers



Suitable for the following Head Supports:

6810 Hensinger, 6826 Anterior

Available in sizes

XS,S,M,L,XL please state collar type and size when ordering

Functional Hand Orthosis

Provide joint alignment and immobilization of the wrist, hand and fingers in a functional position and thumb opposition ability to vary the positioning angle

Indications

- Contracture in flexion or hyperextension of the wrist, including contracted fist
- Contracture of the hand with or without radial or ulnar deviations of the hand
- Contractures in flexion or hyperextension of the interphalangeal articulations including thumb abduction
- Rheumatoid arthritis

Size	Palm Width	Left	Right
Small	5.5 – 7 cm	934SL	934SR
Medium	7 – 8.5 cm	934ML	934MR
Large	8.5 – 10.5 cm	934LL	934LR



MyKids Immobilising wrist brace

- Immobilises the wrist joint thanks to an anatomically contoured palmar splint made from formed malleable aluminium, which limits palmar flexion
- A dorsal splint provides the necessary stiffness to improve the stabilisation of the joint
- 3-phase velcro fasteners enable the wrist brace to be easily and safely tightened
- Left and right versions

Indications

- Immobilisation of the wrist joint

Size	Wrist Circumference	Left	Right
T1	10–12 cm	MPK101T1L	MPK101T1R
T2	12–15 cm	MPK101T2L	MPK101T2R



MyKids Wraparound wrist brace

- flexible and padded design naturally wraps around the thumb and wrist
- exerts the necessary compression on the trapeziometacarpal joint to relieve pain while maintaining the functionality of the hand
- velcro fasteners to regulate compression
- fits left and right

Indications

- compression on the trapeziometacarpal joint required



Size	Wrist Circumference	Code
T1	10–12 cm	MPK100T1
T2	12–15 cm	MPK100T2

MPK 700 Knee Brace

Stabilizing knee support for children

Characteristics

- Paediatric knee orthosis made from breathable, elastic and padded fabric with seamless 'Friendly Skin Technology'.
- Includes removeable anatomically-shaped patella pad.
- With spiral side stays to stabilise the mediolateral movement of the knee joint.
- Includes a removeable 100% silicone anatomical patella pad ** to disperse pressure on the ligament.
- With rear hook-and-loop fasteners to adjust the orthosis, leaving the popliteal fossa free.
- Designed in eye-catching colours with fun shapes.

Size	Circumference	Code
T1	20–26 cm	MPK700T1
T2	26–32 cm	MPK700 T2



SpryStep Paediatric

- Trimmable at the toe, medial side of the footplate and the calf cuff
- Built with increased flexibility for dynamic kids
- Lightweight, durable composite construction engineered with unique laminated characteristics to prevent delamination and breakage
- Proprietary posterior lateral position of the strut increases patient compliance and amplifies energy return
- Fits easily into most shoes

Indications

- Footdrop
- Idiopathic toe walking
- Mild knee hyperextension
- Mild foot and ankle tri-planar instability



Size	Foot Length Min. to Max.	Height Min. to Max.	Code
X-Small	3 3/4" – 5 3/4"	6 1/4" – 7"	UO1752XS
Small	4 1/4" – 6 1/4"	7 1/2" – 8 1/4"	U01752S
Medium	5" – 7"	8 3/4" – 9 1/2"	U01752M
Large	5 1/2" – 7 1/2"	9 3/4" – 10 1/2"	U01752L
X-Large	6" – 8"	11" – 11 3/4"	U01752XL

Additional information

- Calf cuff depth = 2 1/2" (the width of the calf cuff can be trimmed up to 1 1/2" on each side)
- 1. This indicates the shortest the footplate can be trimmed with scissors
- 2. This indicates the lowest the calf cuff can be trimmed with scissors

MyKids Ankle support

- Supports and stabilises the joint allowing mediolateral control of the ankle thanks to its front crossover cords
- Designed with an open pattern at the back to facilitate fitting and provide comfort when walking
- Its velcro fasteners enable compression to be regulated as needed.
- Fits left and right

Size	Above ankle circ	Code
T1	16–19 cm	MPK800T1
T2	19–22 cm	MPK800T2



Push Aequi Junior

- Provides support for moderate ankle instability with diagonal non-elastic straps (limits inversion / eversion while allowing dorsi / plantar flexion)
- Adds compression with adjustable elastic straps
- Allows normal gait and safe sports participation
- Stabilizes ankle even without shoe
- Creates soft, comfortable feel and wicks moisture through the Sympress™ microfibers
- Can be applied independently by most children once taught

Indications

- Acute or sub-acute medial / lateral ankle ligament injuries
- Post-surgical fracture treatment
- Prevention of recurrent ligament injuries
- Chronic ankle instability



Size	Short Heel Circumference	code
One Size	23–27 cm	FH400L02

Universal size fitting left and right.

Sickle foot and clubfoot orthosis

The sickle foot and clubfoot orthosis for babies is a corrective shoe-shaped orthotic device made of soft leather.

- To permit variable correction, the sole of the orthosis is divided into two parts.
- The rear foot is supported by a heel cap, while correction of the forefoot misalignment is done by fitting a tension spring at the other edge of the foot in the Lisfranc joint region.
- The attachment to the large toe's joint and the cuboid bone area at the outer edge of the foot guides the forefoot into the corrected position.
- The orthosis is mainly used for infants and toddlers in the crawling age.



Pigeon toe orthosis for babies

The pigeon toe orthosis for babies is delivered with mounted spring at normal tension, plus two springs for medium and maximum tension and a fastening element.

- Not suitable for walking
- 13 sizes from 80mm to 150mm in 5mm increments

Size	Left	Right
80 mm	039102150	039101150
85 mm	039102140	039101140
90 mm	039102130	039101130
95 mm	039102125	039101125
100 mm	039102120	039101120
105 mm	039102115	039101115
110 mm	039102110	039101110
115 mm	039102105	039101105
120 mm	039102100	039101100
125 mm	039102095	039101095
130 mm	039102090	039101090
140 mm	039102085	039101085
150 mm	039102080	039101080

Sickle Foot shoe with correction

- The sickle foot shoe for babies is equipped with a fixed degree of anti-varus correction.
- The shoe's outsole means that it is suitable for standing and walking.
- In case of one-sided sickle foot, a neutral shoe is available for the unaffected foot.
- Eight sizes from 80 to 150 mm in 10mm increments



Size	Left	Right
Pigeon toe shoe with correction		
80 mm	039502150	039501150
90 mm	039502140	039501140
100 mm	039502130	039501130
110 mm	039502120	039501120
120 mm	039502110	039501110
130 mm	039502100	039501100
140 mm	039502090	039501090
150 mm	039502080	039501080
Pigeon toe neutral position		
80 mm	039507150	039506150
90 mm	039507140	039506140
100 mm	039507130	039506130
110 mm	039507120	039506120
120 mm	039507110	039506110
130 mm	039507100	039506100
140 mm	039507090	039506090
150 mm	039507080	039506080

Pavlik Harness with or without Booties

- Holds hips in 90° flexion and 45° abduction; prevents full extension in abduction position
- Hook and pile closures for easy application, size adjustment and removal
- Wide padded adjustable chest band for baby's comfort
- Available with or without booties

Indications

- Hip dysplasia
- Dislocation
- Prevention of subluxation
- Alternative to hip casting



Size	Chest Band Range	Baby's weight	Without Booties	With Booties
XX-Small	250 – 370 mm	< 6 lbs	T871200	T871600
X-Small	320 – 430 mm	6 – 7 lbs	T871201	T871601
Small	380 – 500 mm	> 7 lbs	T871202	T871602
Medium	440 – 560 mm	> 10 lbs	T871203	T871603
Large	510 – 620 mm	Over 2–3 months	T871204	T871604

Bebax Tri-Plane Paediatric Forefoot Orthosis

- Allows progressive and dynamic correction of congenital forefoot deformities
- Adjusts progressively for proper fit
- Patented, multi-directional hinge adapts easily for correction in all three planes
- Minimises retractions from muscular or neurological disorders
- Offers serial casting; contact moulding to forefoot and heel without plaster
- Removable for stretching and hygiene
- Not recommended for treatment of clubfoot or intended for use while walking



Indications

- Congenital forefoot deformities

Description	Foot Length	Left	Right
Infant	7.5 cm / 3 in	08600001075	08600002075
	8 cm / 3.1 in	08600001080	08600002080
	8.5 cm / 3.3 in	08600001085	08600002085
	9 cm / 3.5 in	08600001090	08600002090
	9.5 cm / 3.7 in	08600001095	08600002095
	10 cm / 3.9 in	08600001100	08600002100
Toddler	10.5 cm / 4.1 in	08600001105	08600002105
	11.5 cm 4.5 in	08600001115	08600002115
	12.5 cm / 4.9 in	08600001125	08600002125
	13.5 cm / 5.3 in	08600001135	08600002135

Multi Use Boot Paediatric

- The Multi use boot can be adjusted by hand to achieve a custom fit in the clinic or bedside
- Adjustable with side adjustment straps to maintain the desired position or stretch
- Provides heel pressure relief as the heel “floats” inside the splint if shaped correctly
- Heel retaining strap and foot cover adjustment strap
- Includes wedge for extra toe stretch

Indications

- Plantarflexion Contracture
- Plantarflexion resistance or for Night time stretch
- Heel Offloading
- Toe Walking
- Plantar Fasciitis
- Calf Tightness



Size	Code
Adult	SPMUBA
Paediatric	SPMUBP

FOOTWEAR



Ward Boot

- Wide and deep soft boot which opens fully to the toes
- Easy entry
- Manufactured using padded brushed cotton
- EVA through wedge rocker sole with posterior heel skive
- Flared sole for increased stability
- Suitable for sole adaptations
- Microfibre foam 3mm inlay
- Reinforced heel counter for extra stability
- 3 return hook and loop straps
- Available for immediate despatch (if not requiring sole adaptations)



Indications

- Oedema
- Diabetic foot
- Bandaged feet
- Forefoot deformities

Size	Code
UK 1–14 - sold in pairs	F05WB

Sized on our Wide and Deep Steprite last.
Please state size required when ordering.

Nürnberg

- Asymmetric diabetic shoe NÜRNBERG is available in a STANDARD and WIDE version
- 30mm thick, rigid and extra strong rocker bottom sole with pitch
- The shoe is delivered without insoles
- Firm outer fabric can be separated from the soft inner fabric in order to avoid possible pressure points and prevent the manifestation of oedema
- Can be ordered as Pair or individually



Sizes	Standard	Wide
35–48	TS4311	TS4411

If ordering individual shoes specify Left or Right.
Please state size required when ordering.

Dresden Standard

- Asymmetric diabetic shoe is available in a STANDARD and WIDE versions
- 30mm thick, rigid and extra strong rocker bottom sole with pitch
- The shoe is delivered without insole
- Firm outer fabric can be separated from the soft inner fabric in order to avoid possible pressure points and prevent the manifestation of oedema
- Can be ordered as Pair or individually



Sizes	Standard	Wide
35-48	TS5811	TS5411

If ordering individual shoes specify Left or Right.
Please state size required when ordering.

Tecnica 1- (Rehab Boots)

- Micro-Perforated Cotton
- Semi-stiff & thermoformable heel counter
- Soft Footbed
- Silver Plus ions antibacterial treatment
- wide volume with adjustable velcro strap closure
- washables at 40° degrees
- shock absorbing and non-slip outsole



Sizes	Code
35-46	T1

Please state size required when ordering.

Tecnica 3E

The Tecnica 3E is designed for a wide range of foot pathologies.

- Suitable for a customised orthopaedic insole to be used
- Lightweight, wide sole unit
- Water-resistant upper
- Suitable for the prevention of diabetic foot ulcers
- Padded lining



Individual sizes	Code
35–50	T3E

Please state size required when ordering.

Tecnica 3M

The Tecnica 3M is a lightweight, breathable shoe designed for comfort and stability.

Its minimal-seam design prevents friction, while the non-slip sole enhances safety. The adjustable Velcro closure and wide opening allow for easy wear, even with one hand.



Individual sizes	Code
EU 35–50	T3M

Please state size required when ordering.

Tecnica DIAB

- Black colour
- Decompresses and immobilizes the foot
- Upper of breathable fabric
- Washable and anti-friction upper
- Rocker Outsole
- Fits left and right

Size	cm	Code
Small	34–36	TD-S
Medium	37–39	TD-M
Large	40–42	TD-L
XLarge	43–45	TD-XL
XXLarge	46–48	TD-XXL

Sold as singles



Tecnica Heel

- Black colour
- Upper of breathable fabric
- Suitable for left or right
- Supersoft padding
- Thermo-formable heel counter
- Non-slip and shock absorbing sole unit
- Sold as a single

Size	Code
34–36	TH-S
37–39	TH-M
40–42	TH-L
43–45	TH-XL
46–48	TH-XXL

Sold as singles



Lymphatic shoe Velcro

- Sold in single left or right
- Heel flap and laces serve as an aid for putting the shoe on and provide additional fastening
- Elastic in the heel area

Size	Left Code	Right Code
36–48	60330L	60330R

Please Specify size and left or right when ordering.



Lymphatic Shoe Lace-Up

- Sold in single left or right
- Lace Fastening
- Integrated toe protector can be removed
- Heel flap and laces serve as an aid for putting on the shoe and for additional fastening
- Long velcro fasteners which can be individually shortened

Size	Left Code	Right Code
36–50	60330L	60330R

Please Specify size and left or right when ordering.



PROSTHETICS



Vacuum Systems

The SmartPuck system has constant vacuum socket technology that can actually improve the circulation and health of the residual limb. It is equipped with an intuitive app that can be manually adjusted and has 3 presets that can be preprogrammed by the user to their preference and set for the activity to give the most comfort for the user.

SP-200 | SmartPuck

AK BK

Build Height: 4.77 cm (1.88")

- Drop-in vacuum for easy sealing
- Holds vacuum longer
- Vacuum runs less often
- Smart app and manual control

PATENT: US9119735 B2



Waterproof Vacuum System (60 Meters)

The AirPuck™ system is a modular socket vacuum reservoir that only has to be evacuated once and can maintain negative pressure within the prosthetic socket all day long. AirPuck is ideal for water sports, and diagnostic fittings.

- Waterproof Vacuum System
- No Electric Components
- Lasts All Day



Airlocks

A lightweight, dual-suspension pin system designed to combine suction suspension comfort with pin suspension security. The airtight seal prevents air from coming into the bottom of the socket, creating suction and reducing pistoning even without a sleeve!

For patients who struggle with pin engagement, use the Deep Air-Lock with the 11 click pin.

- Suction allows for less traction on the limb for increased comfort and decreased liner wear
- Expulsion valve or suspension sleeve are not needed to maintain suction in most cases
- Water-resistant
- Do not use with elevated vacuum



CD103 |
Air-Lock

AK BK

Patent No. 6334876



CD103M |
Medium Air-Lock

AK BK AE BE PED



CD103S |
Small Air-Lock

AK BK AE BE PED

Deep Air-Locks



CD103D |
Deep Air-Lock





CD103MD |
Medium Deep Air-Lock



CD103SD |
Small Deep Air-Lock

Pins sold separately.

	Description	Specifications	Code
	Air-Lock Push Button Valve	An aftermarket addition that can be retrofit on all Air-Locks. Sold Separately.	CD103BV
	Lock wrench	Makes maintenance easy.	CD103WH

Additions

	Alignable Connector	Offset up to 15.24m (0.6")	CD103AF
	One-Shot Connector	Offset up to 15.24m (0.6")	CD111
	Single Direction Insert	Offset up to 0.838 cm (0.33")	CD103SDI
	Multi-Direction Insert	Offset up to 0.838 cm (0.33")	CD103MDI
	10 mm, Two Part 8-click Pin	350 lbs capacity 3.30 cm (1.3") long. Includes spacers	CD103P8
	10 mm, Two Part 11-click Pin	350 lbs capacity 4.19 cm (1.65") long. Includes spacers	CD103P11
	10 mm, 8-click Brass	For active, heavier patients 350 lbs capacity 3.30 cm (1.3") long. Includes spacers	CD103P8H
	10 mm, 11-click Brass	For active, heavier patients 350 lbs capacity 4.19 cm (1.65") long. Includes spacers	CD103P11H
	6 mm, Two Part 8-click Pin	3.30 cm (1.3") long. Includes spacers	CD103PX
	1/4 x 20, Two Part 8-click Pin	3.30 cm (1.3") long. Includes spacers	CD103PQ

Easy-off™ Lock

Our second generation lock has a more robust lever, tooth and larger O-ring. It is very similar to the Air-Lock in that it stays airtight to create suction in the socket, the Easy-Off™ Lock can be used with elevated vacuum. Its unique lever design also makes doffing easy, especially for amputees with hand strength issues, arthritis, or trouble reaching the release button.

- Easy donning and doffing with lever release
- Self-lubricating materials reduce wear
- Water-resistant
- Can be used with elevated vacuum
- Airtight "suction" or vacuum suspension with the safety and security of a pin
- Easy removal without holding release button.
- Push or pull to release
- Pins are now sold separately and come in a two pack.



CD117 | Easy-Off™ Lock

AK BK

Patent No. 6334876.

Other patents pending.



CD117D | Deep Easy-Off™ Lock

AK BK

	Description	Specifications	Code
	Alignable Connector	Offset up to 1.52 cm (0.6")	CD103AF
	One-Shot Connector	Offset up to 1.52 cm (0.6")	CD111
	Single-Direction Insert	Offset up to 0.76 cm (0.33")	CD103SDI
	Multi-Direction Insert	Offset up to 0.76 cm (0.33")	CD103MDI
	10 mm, Two Part 8-click Pin	350 lbs capacity 3.30 cm (1.3") long. Includes spacers	CD103P8
	10 mm, Two Part 11-click Pin	350 lbs capacity 4.19 cm (1.65") long. Includes spacers	CD103P11
	10 mm, 8-click Brass For active, heavier patients	350 lbs capacity 3.30 cm (1.3") long. Includes spacers	CD103P8H
	10 mm, 8-click Brass For active, heavier patients	350 lbs capacity 3.30 cm (1.3") long. Includes spacers	CD103P8H
	10 mm, 11-click Brass For active, heavier patients	350 lbs capacity 4.19 cm (1.65") long. Includes spacers	CD103P11H
	6 mm, Two Part 8-click Pin	3.30 cm (1.3") long. Includes spacers	CD103PX
	1/4 x 20, Two Part 8-click Pin	3.30 cm (1.3") long. Includes spacers	CD103PQ

Drop-in Suction Puck

The Drop-In Suction Puck removes the obstruction of having an externally mounted valve as well as having the option of a suction capable drop-in puck for your 3D printing needs.

CD120SP | Drop-In Suction Puck

AK BK

Build Height : 3.81 cm (1.5")

Diameter : 6.24 cm (2.46")

- Enhanced comfort for users
- Efficient air expulsion
- Built In four-hole connector



Drop-In Fabrication Dummies (Sold separately)



C10AD | Drop-In Air-Lock

Fabrication Dummy
(New Product)



CD122EFD | Drop-In Easy-Off

Fabrication Dummy
2nd Generation
Must use 2nd Generation
with the current design



CD120SPD | Drop-In Suction

Puck Fabrication Dummy

Drop-in Locks

New lighter and stronger design. Great for 3D printed sockets and traditional fabrication with the new fabrication.

C10A | Air-Lock Drop-In

AK BK

Build Height : 5.1 cm (2.010")

Diameter : 6.24 cm (2.46")

- Water-Resistant
- Airtight suction - dual suspension security of a pin
- Expulsion valve or suspension sleeve not needed in most cases



2nd Generation: Easy donning and doffing with a more robust lever release and tooth

CD122E | Easy-Off Drop-In

AK BK

Build Height : 5.52 cm (2.175")

Diameter : 6.14 cm (2.42")

- Great for 3D printed sockets

For 3D printing contact Coyote® for your STL and OBJ Files.



Lanyard

This is a simple, lightweight, ultra low build height lanyard lock that helps pistoning. Our design for the metal puck has the connector posts built in for easier layups. The lanyard is segmented making easy length adjustments. They work well for simple visual donning and doffing and have K1 to K4 activity levels.



CD120 |
Lanyard Plastic Puck
AK BK



CD121P |
Lanyard Metal Puck with Posts
AK BK

Integrated 4 hole connector
Distal end of metal puck.



CD120L |
Lanyard & Low Profile Screw Kit
24 inch strapping
(puck not included)



CD121 | Lanyard Metal Puck
AK BK

Integrated 4 hole connector
Distal end of metal puck.



CD121D | Lanyard Aluminum Dummy with Posts

Suction Lanyard

Designed for comfort and performance, the Suction Lanyard’s airtight design creates a larger suspension area for a more secure, intimate socket fit. The straightforward lanyard system reduces pistoning and allows for easy donning and doffing. We’re excited to bring this innovative solution to your customers.

Key features:

- Versatile fabrication: Compatible with multiple connector options for lower-extremity prostheses.
- Adjustable: Segmented design allows quick length adjustments.
- User-friendly: Ideal for visual donning and doffing across all activity levels.
- Flexible applications: The Suction Lanyard Drop-In works seamlessly with 3D-printed sockets or with our Tooling Dummy for thermoformed or laminated drop-in sockets.

C12S | Suction Lanyard

AK U.S. Patent No. 11,517,455

- Simple Donning and Doffing like a typical lanyard.
- Seals the distal end of the socket to create a suction socket.
- Increased comfort, reduced pistoning.



Drop-In version will be available for 3D printing and traditional fabrication methods.

Description	Part Number
Suction Lanyard	C12S
Suction Lanyard Drop-In	C12SD
Suction Lanyard Straps	C12LS
Suction Lanyard Drop-In Tooling Dummy	C12DD

Drop-In version will be available for 3D printing and traditional fabrication methods.

Locking Lanyard

CD117L | Easy-Off Locking Lanyard

AK

2nd Generation, Robust Lever Design / Push Button, lanyard lock

- Easy donning and doffing with lever release
- Water-resistant
- Airtight "suction" with the safety and security of a pin



CD103L | Air-Lock Locking Lanyard



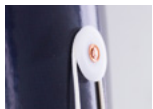
AK

Push Button Design, lanyard lock

- Suction allows for less traction on the limb for increased comfort and decreased liner wear
- Expulsion valve or suspension sleeve are not needed to maintain suction in most cases
- Water-resistant



One pin is included with the locking lanyard locks

	Description	Specifications	Code
	5 Degree AK Connector	Capable of up to 3.81 cm (1.5") of Offset with 5 degrees of flexion angle.	CD115CF5
	Locking Lanyard Pin	350 lbs capacity, 4.19 cm (1.65") long. Includes cord and spacers.	CD118P
	Lanyard Pinch Disk	Holds Lanyard cord to side of socket.	CD118PD

Grommet Lock

Designed with pediatric patients in mind, the Grommet Lock is simple, lightweight, and durable for use with upper and lower extremity. Just like our adult locks, it has multiple connector options for fabrication of a lower extremity prosthetic.

CD104 | Grommet Lock

PED

- Pediatric only
- Lightweight, durable plastic
- Water-resistant
- Can be modified for minimum clearance
- Can be used in upper and lower extremity prosthetics
- Three thread options for any liner type (10 mm, 6 mm, $\frac{1}{4} \times 20$)
- Weight limit of 100 lbs



Pins are now sold separately and come in a two pack.



CD104P10
10 mm Pin



CD104P6
6 mm Pin



CD104PQ
 $\frac{1}{4} \times 20$ Pin



CD104P6H
6 mm Pin

Connectors

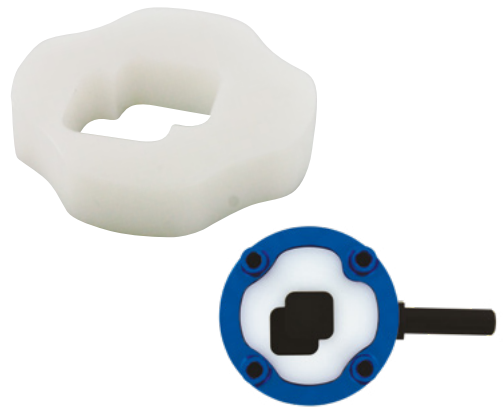
CD103AF | Alignable Connector

Up to 1.52 cm (0.6") of offset, 35 g. Ideal for use with Air-Lock and Easy Off Locks. Can be glued to the lock in any offset position for fabrication into the socket, or keys directly onto locks when used with inserts. Eliminates need for offset components. For laminations or thermoforming. 350 lb weight limit.



CD103MDI | Multi-Direction Insert

Up to 0.83 cm (0.33") offset in two directions. Installed into connector to allow connector to be keyed onto bottom of lock in centered position or offset in two directions. For laminations or thermoforming. Use with Alignable Connector or One-Shot Connector.



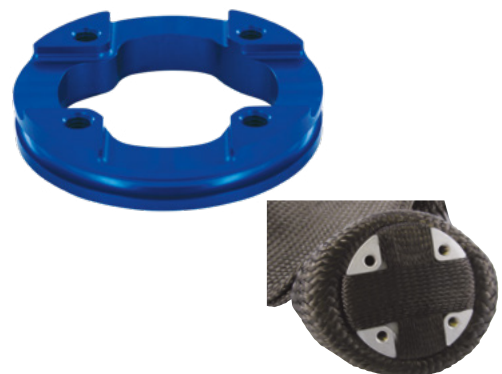
CD103SDI | Single-Direction Insert

Up to 0.83 cm (0.33") of offset in one direction. Installed into connector to allow connector to be keyed onto bottom of lock in centered position or offset in one direction. For laminations or thermoforming. Use with Alignable Connector or One-Shot Connector.



CD111 | One-Shot Connector

Up to 1.52 cm (0.6") offset, 44 g. Connector with tie off ring for easier lay-ups. Lower profile than Alignable Connector. Can be glued to lock in desired location or keyed onto lock using inserts. For laminating only. 350 lb weight limit.



C53TS | Offset 3 Prong

Greater Offset, Strong bendable arms for adjustability. Anatomical knee center positioning for long amputations. 265 lb. weight limit.



CD115CF5 | 5 Degree AK Connector

Capable of up to 3.81 cm (1.5") of offset with 5 degrees of flexion angle. Connectors primary use is with Lanyard Pin (CD118P) lanyard locks (CD103L, CD117L) can also be used with other Coyote® locks or the Integrator. Eliminates the need for offset components. For lamination or thermoforming. 265 lb. weight limit.



CD119SC | Test Socket Connector

Economical, cost effective, easy way to glue on connector designed specifically for Vivac check sockets. Connects to standard four hole componentry with our new high strength bridging design. Bonds well with Coyote Quik Adhesive. 1.76 cm (11/16") height, 6.98 cm (2 3/4") diameter, reusable.



CD106 | Alignment Coupler

Offset for ML and AP of 1.62 cm (0.64"). Easily installs on four hole connector. Easy to adjust with 3 mm wrench. For fitting purposes only. 265 lb weight limit.



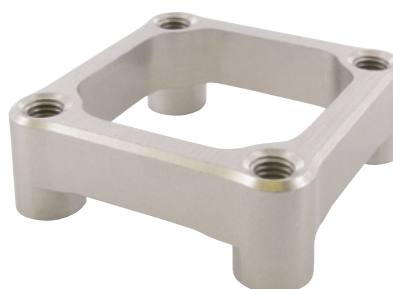
CD103PFF | Pediatric Fast Four Connector

Pediatric four-hole connector that keys directly onto the center of the lock for easy and fast fabrication. Used with Grommet Lock, Small Air-Lock or Medium Air-Lock. For laminations or thermoforming. 100 lb weight limit.



CD103PAF | Pediatric Alignable Connector

Used with Grommet Lock, Small Air-Lock or Medium Air-Lock. Laminating or thermoforming. This model can be used to offset the connector from the bottom of the pin in virtually any location by up to 0.63 cm (0.25"). 100 lb weight limit.



Proximal Lock

Simply easier. Designed to control rotation and be more user-friendly, the Proximal Lock attaches over a larger area, which distributes weight more evenly. The adhesive included with each lock is flexible even after it sets, making donning simpler.

- ZERO CLEARANCE lock
- Controls rotation
- Flexible attachment rolls on easier
- Can be used with seal band liners
- Adhesive included with each lock
- Use with your choice of distal adapters
- Ideal for long limbs with minimal clearance
- Larger attachment distributes more tension
- Bills like a distal pin lock system (L5671)

The Proximal Lock includes a reinforcement strap for extra reinforcement, less friction and repair.



CD116 | Proximal Lock

AK BK AE BE PED

Patent No. 6666894, 7431738, 7077868. Other patents pending.

Includes:

- liner attachment
- lock
- Fabrication dummy
- Glue form
- Adhesive.



CD116XS | Extra Strap Kit

For additional liners. Includes strap and liner attachment.



CD116SA | Silicone Adhesive

Additional adhesive if needed for Proximal Lock. A tube is included with each lock.

Summit™ Lock

Specifically for long limbs, the Summit™ Lock is designed to control rotation and requires zero clearance! There's no need to purchase a locking liner and you can use any socket adapter. CD101 can be retrofit.

- Liner attachment shape makes the liner
- simple to roll on
- Easy to cover cosmetically
- Ergonomic tab feeds easily into lock

Liner attachment is applied with "Coyote Quik Glue" or a 5 minute epoxy.
Do not use silicone based adhesive.



CD101 | Summit Lock

AK BK AE BE PED

Base Length 4.44 cm (1.75")

Patent No. 6666894



CD102 | LowPro Summit™ Lock

AK BK AE BE PED

Base Length 6.35 cm (2.5")

Patent No. 6666894



CDDMA51 | Dispenser 50cc cartridge

Dispenser for CD4150 adhesive.
Easy to control flow, light-weight.



CD401 | 6-Pack Extra Mix Tips

For 50 cc cartridge

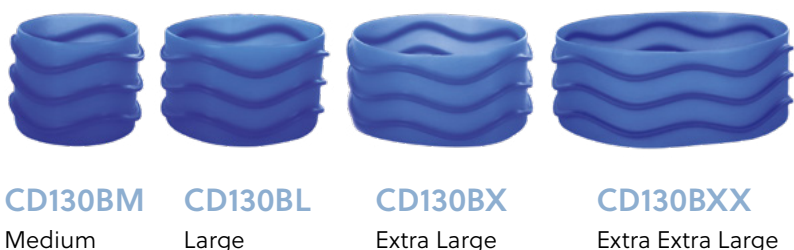
CD402 | 20-Pack Extra Mix Tips

For 50 cc cartridge

Wave Suction Band

The Coyote Wave Suction Band comes in multiple sizes.

- The Suction Band helps create dual suspension in combination with our Proximal, Summit and Low-Pro Locks.
- The airtight suspension produces a more intimate fit with added security.
- The Push Button Valve is recommended to relieve suction when donning and doffing.
- Silicone adhesive is included.



Wave Suction Band sizes

Size	Circumference	Width	Thickness	Part Number
Medium	23–30 cm	7.62 cm	4 mm	CD130BM
Large	30–38 cm	7.62 cm	4 mm	CD130BL
Extra Large	38–48 cm	7.62 cm	4 mm	CD130BX
Extra Extra Large	48–62 cm	7.62 cm	4 mm	CD130BXX

The sizes are guidelines and can vary depending on the patient. Smaller sizes are more snug.

Valves

Coyote's auto expulsion valves are easy to install in new sockets with fabrication tooling or retrofit. The built-in auto expulsion quietly expels air all day with no fuss and features a higher "crack" pressure than most valves, which helps to create a higher level of hypobaric suspension.



CD105 | CQL™ Auto Expulsion Valve

Height: 11 mm. Patent pending.

- Easy to clean and retrofit
- Quiet expulsion
- Low profile
- Includes a filter to block debris



CD103BV | Air-Lock Push Button Valve

An aftermarket addition that can be retrofit on all Air-Locks. Sold Separately.

CD103WH | Lock Wrench

Makes maintenance easy.



Air-Lock Push Button Valve

Increase suction suspension even more with the new air expulsion valve release button for all Coyote Air-Locks.

- Air expulsion built into the release button.
- Quiet expulsion.
- Increases negative pressure in the socket.



All Air-Locks can be easily retrofit. Sold Separately.

Quik Glue Adhesive

Great for any situation when you need something glued quickly and easily.
Both Adhesives ship non-hazardous and are safe with no odor.

White: Ideal Multi-Purpose Adhesive

CD4220

- Very quick set with no sag
- 30 Second
- 220 cc cartridge.
- Dispenser required
- includes 1 mix tip.

30 Second set up time
2 minute full cure time

CD4150

50 cc cartridge



Tan: More Work Time

CD4350

- 60 second with no sag
- Is solid when cured
- Bonds well to fabric, plastic and metal
- Easy to smooth
- 220 cc cartridge.
- Dispenser required.
- includes 1 mix tip.

60 Second set up time
3 minute full cure time

CD4350

50 cc cartridge



Black: Stays Flexible when Cured

CD4220S

- Longer, 90 second set time with no sag
- Stays flexible when cured
- Bonds well to fabric, plastic and metal
- Easy to smooth
- 220 cc cartridge.
- Dispenser required.
- includes 1 mix tip.

90 Second set up time
7 minute full cure time

CD4250

50 cc cartridge

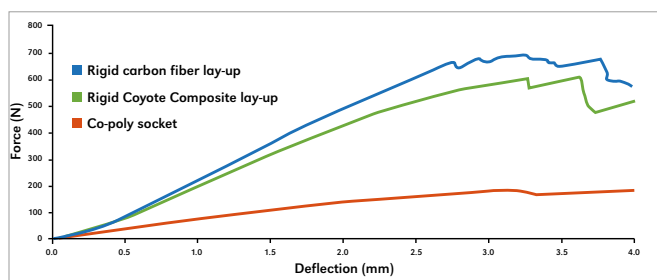


*Recommend purchasing additional tips - Tips must be replaced prior to each use.

Coyote Composite

A great alternative to itchy, expensive carbon fiber braid! Coyote Composite, is made from basalt filament, a safe, tough material for composite sockets and AFOs. Also relatively easy to cut and finish compared to other materials.

- Extremely durable
- Resistant to cracking
- Less itch than carbon
- Non-carcinogenic and non-toxic
- Strong and lightweight
- Finishes smooth, with superior resin saturation
- Unique dampening characteristics
- Less expensive



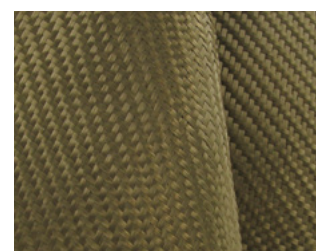
BRAID

Our proprietary braid was designed to be used in equivalent amounts to carbon. Coyote Composite is more flexible than carbon (we consider this to be an advantage), but if you need to match the rigidity of a carbon socket, use additional layers of stockinette and/or carbon tape.



FABRIC

Coyote Composite fabric sheeting can be used for reinforcement layers of heavy duty sockets and/or AFOs. The material is thin and lightweight which allows for greater flexibility in adding the ideal amount of reinforcement.



ORDERING OPTIONS

Braid	Type		Size	Length
	CD	B	3"	10'
	CD	B	3"	20'
	CD	B	3"	82'
	CD	B	4"	10'
	CD	B	4"	20'
	CD	B	4"	82'
	CD	B	6"	10'
	CD	B	6"	20'
	CD	B	6"	82'
	CD	B	7"	10'
	CD	B	7"	20'
	CD	B	7"	82'
	CD	B	8"	10'
	CD	B	8"	20'
	CD	B	8"	82'
	CD	B	10"	10'
	CD	B	10"	20'
	CD	B	10"	82'

Fabric	Type		TPI*	Length
	CD	F	350	3'

Fabric available in 0.17 mm Thickness.
Has a Bi-directional weave.
*TPI: threads per inch.

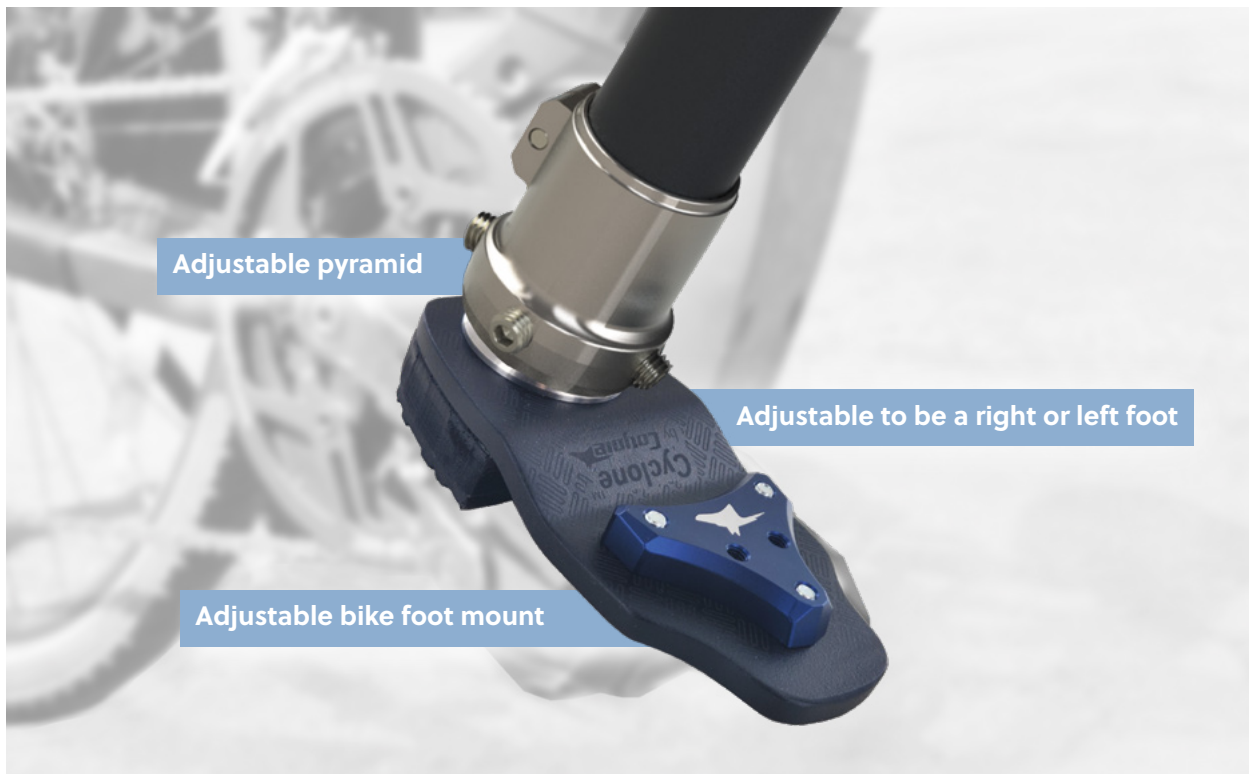


Composite on outside of lay-up



Composite on inside of lay-up

Cyclone™ Bike Foot



The Coyote Cyclone™ Bike Foot (FB1) was designed for K3-K4 level ambulators who desire a light weight, durable, and rigid foot. It is designed to give optimal power stroke, fit, and alignment for cycling.

The Cyclone™ Bike Foot was designed to minimize foot weight without compromising durability. While pedaling, the Cyclone's™ short foot length increases pedal stroke efficiency giving unmatched energy transfer, eliminates energy lost to deflection caused by the foot shell and shoe flex, and unnecessary weight. Can be used with two or three hole cleats.

FB1 | Cyclone™ Bike Foot

AK BK

Patent Pending

- Light Weight
- Durable
- Rigid
- Optimal

Power Stroke, Fit, & Alignment



ORTHOTIC COMPONENTS



Coyote Dynamic AFO Strut Kit

The Coyote Dynamic Strut Design combines a unique combination of strength and flex that other posterior dynamic struts do not offer. The AFO has the fit and comfort of a custom AFO with a posterior mounted dynamic strut for optimal ambulation. The strut is mounted to a custom thermoformed AFO and designed for average daily use; walking, working, hiking, biking, golf. *Has not been tested with running.*

Designed to Flex

- Moves with the Patient
- Helps create a Natural Gait
- Works great with a thermoformed orthosis
- Offloads weight from the foot and ankle
- Provides Energy Response
- Designed for use in a thermoformed orthosis

The Kit comes with the following:-



Dynamic AFO Strut Kit

Product Name	Weight Range	Code
Extra Soft Flex Kit	32–68 Kg (70–150 lbs)	CD207XS
Soft Flex Kit	41–90 Kg (90–200 lbs)	CD207S
Medium Flex Kit	57–102 Kg (125–225 lbs)	CD207M
Rigid Flex Kit	90–127 Kg (200–280 lbs)	CD207R
Extra Rigid Flex Kit	118–158 Kg (260–350 lbs)	CD207XR

All of the above suitable for patient activity level -
Light to medium

Rotation and Flexion Shims

Shims designed to adjust the rotation or flexion angles on Coyote Dynamic Struts AFOs.

Product Name	Code
Rotation Shim	CD206RSP
Flexion Shim	CD206FSP

Replacement Struts

Replacement struts are available and do not come with the dummies for manufacturing

Product Name	Code
Extra Soft Flex Replacement Strut	CD207XSS
Soft Flex Replacement Strut	CD207SS
Medium Flex Replacement Strut	CD207MS
Rigid Flex Replacement Strut	CD207RS
Extra Rigid Flex Replacement Strut	CD207XRS

Dynamic Strut Fitting Kit



Product Name	Code
Dynamic Strut Fitting Kit	CD207FK

For Test & Demo Purposes Only

Contains:

CD207XSS, CD207SS, CD207MS, CD207R, CD207XR demo struts, one set of mounting plates and fabrication tooling, and a set of Rotation Shims and set of Flexion Shims.

Coyote Mini Dynamic Strut

Coyote's Mini Dynamic Strut is made from Resilergy™, the same responsive composite material as our standard strut, just a smaller size at approximately 5 cm shorter at 21.5 cm long. Our struts combine a unique combination of strength and flex that other posterior dynamic struts do not offer. The Mini Strut was designed for smaller patients, with softer flex options available. These struts are comfortable enough for average daily use; walking, working, hiking, biking, golf. *Has not been tested with running.*

Indications

- Designed for smaller patients
- Kit includes tooling and mounting
- Replacement struts available
- The Mini Strut is 21.5 cm long so we recommend a minimum AFO height of 24–25 cm depending on set up



Product Name	Weight Range	Code
Mini Soft Flex Kit	31–49 Kg (70–110 lbs)	CD209S
Mini Medium Flex Kit	41–58 Kg (90–130 lbs)	CD209M
Mini Rigid Flex Kit	49–68 Kg (110–150 lbs)	CD209R

Additional information

The Mini Strut is 21.5 cm long and 3.2 cm wide and the AFO needs to be longer with room for the AFO to fit into footwear.

The Dynamic Strut is 26.7 cm Long and 3.2 cm wide

Paediatric AFO Strut

- Adds strength, reinforcement and support to Thermoplastic AFOs
- Concave design for strength and thermoplastic vacuum drawing compatibility
- All activity levels for children up to 90 lbs.
- Lighter weight than a solid AFO
- Simple design
- Trimable
- Provides dynamic return

Indications

- Helps with hemiplegia, Cerebral Palsy, Spina Bifida when there is correction needed in the foot
- Helps with Tri-planar control along with control in the Sagittal and Coronal planes
- Dynamic Return with Plantar flexion Resist/
Dorsiflexion Resist



Product Name	Code
Paediatric AFO Strut	CD205PS

Materials

SPENCO

Green
Spenco

- Spenco is the leading cover choice for shock absorption, impact reduction and overall foot comfort.
- The 4-way stretch fabric helps reduce friction and shear
- Sold by the 1066 mm x 1219 mm sheet

Colour	Thickness	Sheet Size	Code
Green	3 mm	1066 × 1219 mm	SPEN-GR-3
Green	1.5 mm	1066 × 1219	SPEN-GR-1

ON STEAM/on Dry

Black
OnSteam

- Very High Quality
- 100%breathable
- Temperature regulating
- Anti Odour
- This exceptional microfibre material has the special benefits of being extremely absorbent and sweat-resistant.

Colour	Thickness	Linear Meter	Code
Black	0.8 mm	1400 mm	010912001

CARBON VINYL

Carbon
Vinyl

- Carbon Look artificial leather
- Breathable
- Insole top cover material

Colour	Thickness	Sheet Size	Code
Black	0.8 mm	1460 × 1000 mm	011455946
Orange	0.8 mm	1460 × 1000 mm	011455947

P2 covered with On Steam

P2
OnSteam

- P2 – PU Foam material excellent resetting characteristics
- On Steam Top Layer
- Microfibre OnSteam Top layer which is sweat-resistant.

Colour	Thickness	Sheet Size	Code
grey/black	2 mm	2100 × 1350 mm	011021020

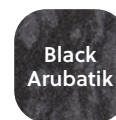
NEOPRENE

Black

Textile-backed both sides (terry/polyester jersey)

Colour	Thickness	Sheet Size	Code
Black	2 mm	1500 × 1000 mm	NEOBL

Arubatik 35



- EVA foam material
- approx. 35° Shore A

Colour	Thickness	Sheet Size	Code
Black	1 mm	1030 × 1035 mm	010643010
Black	2 mm	1030 × 1035 mm	010643020
Black	3 mm	1030 × 1035 mm	010643030
Black	4 mm	1030 × 1035 mm	010643040
Black	5 mm	1030 × 1035 mm	010643050
Black	6 mm	1030 × 1035 mm	010643060

Colour	Thickness	Sheet Size	Code
Beige	1 mm	1030 × 1035 mm	010642010
Beige	2 mm	1030 × 1035 mm	010642020
Beige	3 mm	1030 × 1035 mm	010642030
Beige	4 mm	1030 × 1035 mm	010642040
Beige	5 mm	1030 × 1035 mm	010642050
Beige	6 mm	1030 × 1035 mm	010642060

Glues/Adhesives

Why Coyote Quick Glue?

Whether it's for fabrication, socket adapters, or valves, we have found Coyote Quik Glue to be the easiest, most cost-effective adhesive on the market. Available in 30, 60, & 90 second set times to give you a range depending on your situational needs.

30 Seconds CD4220 & CD4150

- 50 cc and 220 cc options
- Multiple uses including repairing sockets
- Great for attaching socket blocks
- Very quick set with no sag
- Ships non-hazardous
- Safe, no odor.
- Spare Mix tips available

Size	Code
220 cc	CD4220
50 cc	CD4150



60 Seconds CD4320 & CD4350

- 50 cc and 220 cc options
- Multiple uses, including repairing sockets
- Great for attaching socket blocks
- Very quick set with no sag
- Ships non-hazardous
- Safe, no odor
- Spare Mix tips available

Size	Code
220 cc	CD4320
50 cc	CD4350



90 Seconds CD4220S & CD4250

- 50 cc and 220 cc options
- Bonds well to fabric, plastic, and metal
- Used for attaching componentry
- Stays flexible when cured
- Longer set time with no sag
- 7 minute full cure time
- Easy to smooth
- Safe, no odor
- Spare Mix tips available

Size	Code
220 cc	CD4220S
50 cc	CD4250



Terms and Conditions

How to Order

Buchanan Orthotics can accept orders in the following ways:

- By telephone 0141 440 1999
- By fax 0141 440 5999
- By email – orders@buchananorthotics.co.uk

Please ensure your order has the correct Purchase Order quoted.

Please specify product code, quantity required and any special delivery information.

Customer service can supply order conformation if required.

Delivery Options

Buchanan Orthotics can dispatch your item in the following method:

- Next Day Courier
- Timed Courier (Pre-10 or Pre-12)
- Saturday Delivery

You will be advised if an item is not in stock.

(Additional charges may apply to timed delivery)

Returns procedure

All stock products can be returned within a 30-day period. All items must be in their original packaging and in a resalable condition. Any items which have been worn or have a risk of infection can not be returned.

There are certain products which we cannot accept returns on:

- Split size and/or insoles including compensation insoles.
- Any item made in a custom size
- Any item which has been adapted
- Any item which is clearly marked as non-returnable in the catalogue

Any carriage will not be refunded on items and may be charged on replacements.

Please contact our Customer Services team for further advice for this on 0141 440 1999

Single patient use

Any product supplied by Buchanan Orthotics is strictly for single patient use only, for each individual patient and must not be adapted in anyway, as this will render the registration marking and warranty invalid and may lead to cross infection between patients.

All items should have been fitted originally by an experienced and qualified Healthcare Professional, and failure to ensure this would invalidate any liability from Buchanan Orthotics.

Please take careful note of fitting advice and when to replace the products if they are damaged or worn. Buchanan Orthotics clinicians are on hand for any advice required.



Buchanan Orthotics

603 Helen Street, Glasgow, G51 3AR
www.buchananorthotics.co.uk
orders@buchananorthotics.co.uk
0141 440 1999

Opening hours:

Monday-Thursday:
Friday:

9am-5pm
9am-4pm

