

PROSTHETICS



Vacuum Systems

The SmartPuck system has constant vacuum socket technology that can actually improve the circulation and health of the residual limb. It is equipped with an intuitive app that can be manually adjusted and has 3 presets that can be preprogrammed by the user to their preference and set for the activity to give the most comfort for the user.

SP-200 | SmartPuck

AK BK

Build Height: 4.77 cm (1.88")

- Drop-in vacuum for easy sealing
- Holds vacuum longer
- Vacuum runs less often
- Smart app and manual control

PATENT: US9119735 B2



Waterproof Vacuum System (60 Meters)

The AirPuck™ system is a modular socket vacuum reservoir that only has to be evacuated once and can maintain negative pressure within the prosthetic socket all day long. AirPuck is ideal for water sports, and diagnostic fittings.

- Waterproof Vacuum System
- No Electric Components
- Lasts All Day



Airlocks

A lightweight, dual-suspension pin system designed to combine suction suspension comfort with pin suspension security. The airtight seal prevents air from coming into the bottom of the socket, creating suction and reducing pistoning even without a sleeve!

For patients who struggle with pin engagement, use the Deep Air-Lock with the 11 click pin.

- Suction allows for less traction on the limb for increased comfort and decreased liner wear
- Expulsion valve or suspension sleeve are not needed to maintain suction in most cases
- Water-resistant
- Do not use with elevated vacuum



CD103 |
Air-Lock

AK BK

Patent No. 6334876



CD103M |
Medium Air-Lock

AK BK AE BE PED



CD103S |
Small Air-Lock

AK BK AE BE PED

Deep Air-Locks



CD103D |
Deep Air-Lock





CD103MD |
Medium Deep Air-Lock



CD103SD |
Small Deep Air-Lock

Pins sold separately.

	Description	Specifications	Code
	Air-Lock Push Button Valve	An aftermarket addition that can be retrofit on all Air-Locks. Sold Separately.	CD103BV
	Lock wrench	Makes maintenance easy.	CD103WH

Additions

	Alignable Connector	Offset up to 15.24m (0.6")	CD103AF
	One-Shot Connector	Offset up to 15.24m (0.6")	CD111
	Single Direction Insert	Offset up to 0.838 cm (0.33")	CD103SDI
	Multi-Direction Insert	Offset up to 0.838 cm (0.33")	CD103MDI
	10 mm, Two Part 8-click Pin	350 lbs capacity 3.30 cm (1.3") long. Includes spacers	CD103P8
	10 mm, Two Part 11-click Pin	350 lbs capacity 4.19 cm (1.65") long. Includes spacers	CD103P11
	10 mm, 8-click Brass	For active, heavier patients 350 lbs capacity 3.30 cm (1.3") long. Includes spacers	CD103P8H
	10 mm, 11-click Brass	For active, heavier patients 350 lbs capacity 4.19 cm (1.65") long. Includes spacers	CD103P11H
	6 mm, Two Part 8-click Pin	3.30 cm (1.3") long. Includes spacers	CD103PX
	1/4 x 20, Two Part 8-click Pin	3.30 cm (1.3") long. Includes spacers	CD103PQ

Easy-off™ Lock

Our second generation lock has a more robust lever, tooth and larger O-ring. It is very similar to the Air-Lock in that it stays airtight to create suction in the socket, the Easy-Off™ Lock can be used with elevated vacuum. Its unique lever design also makes doffing easy, especially for amputees with hand strength issues, arthritis, or trouble reaching the release button.

- Easy donning and doffing with lever release
- Self-lubricating materials reduce wear
- Water-resistant
- Can be used with elevated vacuum
- Airtight "suction" or vacuum suspension with the safety and security of a pin
- Easy removal without holding release button.
- Push or pull to release
- Pins are now sold separately and come in a two pack.



CD117 | Easy-Off™ Lock

AK BK

Patent No. 6334876.

Other patents pending.



CD117D | Deep Easy-Off™ Lock

AK BK

	Description	Specifications	Code
	Alignable Connector	Offset up to 1.52 cm (0.6")	CD103AF
	One-Shot Connector	Offset up to 1.52 cm (0.6")	CD111
	Single-Direction Insert	Offset up to 0.76 cm (0.33")	CD103SDI
	Multi-Direction Insert	Offset up to 0.76 cm (0.33")	CD103MDI
	10 mm, Two Part 8-click Pin	350 lbs capacity 3.30 cm (1.3") long. Includes spacers	CD103P8
	10 mm, Two Part 11-click Pin	350 lbs capacity 4.19 cm (1.65") long. Includes spacers	CD103P11
	10 mm, 8-click Brass For active, heavier patients	350 lbs capacity 3.30 cm (1.3") long. Includes spacers	CD103P8H
	10 mm, 8-click Brass For active, heavier patients	350 lbs capacity 3.30 cm (1.3") long. Includes spacers	CD103P8H
	10 mm, 11-click Brass For active, heavier patients	350 lbs capacity 4.19 cm (1.65") long. Includes spacers	CD103P11H
	6 mm, Two Part 8-click Pin	3.30 cm (1.3") long. Includes spacers	CD103PX
	1/4 x 20, Two Part 8-click Pin	3.30 cm (1.3") long. Includes spacers	CD103PQ

Drop-in Suction Puck

The Drop-In Suction Puck removes the obstruction of having an externally mounted valve as well as having the option of a suction capable drop-in puck for your 3D printing needs.

CD120SP | Drop-In Suction Puck

AK BK

Build Height : 3.81 cm (1.5")

Diameter : 6.24 cm (2.46")

- Enhanced comfort for users
- Efficient air expulsion
- Built In four-hole connector



Drop-In Fabrication Dummies (Sold separately)



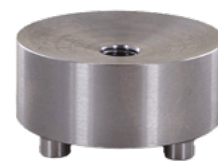
C10AD | Drop-In Air-Lock

Fabrication Dummy
(New Product)



CD122EFD | Drop-In Easy-Off

Fabrication Dummy
2nd Generation
Must use 2nd Generation
with the current design



CD120SPD | Drop-In Suction

Puck Fabrication Dummy

Drop-in Locks

New lighter and stronger design. Great for 3D printed sockets and traditional fabrication with the new fabrication.

C10A | Air-Lock Drop-In

AK BK

Build Height : 5.1 cm (2.010")

Diameter : 6.24 cm (2.46")

- Water-Resistant
- Airtight suction - dual suspension security of a pin
- Expulsion valve or suspension sleeve not needed in most cases



2nd Generation: Easy donning and doffing with a more robust lever release and tooth

CD122E | Easy-Off Drop-In

AK BK

Build Height : 5.52 cm (2.175")

Diameter : 6.14 cm (2.42")

- Great for 3D printed sockets

For 3D printing contact Coyote® for your STL and OBJ Files.



Lanyard

This is a simple, lightweight, ultra low build height lanyard lock that helps pistoning. Our design for the metal puck has the connector posts built in for easier layups. The lanyard is segmented making easy length adjustments. They work well for simple visual donning and doffing and have K1 to K4 activity levels.



CD120 |
Lanyard Plastic Puck
AK BK



CD121P |
Lanyard Metal Puck with Posts
AK BK

Integrated 4 hole connector
Distal end of metal puck.



CD120L |
Lanyard & Low Profile Screw Kit
24 inch strapping
(puck not included)



CD121 | Lanyard Metal Puck
AK BK

Integrated 4 hole connector
Distal end of metal puck.



CD121D | Lanyard Aluminum Dummy with Posts

Suction Lanyard

Designed for comfort and performance, the Suction Lanyard's airtight design creates a larger suspension area for a more secure, intimate socket fit. The straightforward lanyard system reduces pistoning and allows for easy donning and doffing. We're excited to bring this innovative solution to your customers.

Key features:

- Versatile fabrication: Compatible with multiple connector options for lower-extremity prostheses.
- Adjustable: Segmented design allows quick length adjustments.
- User-friendly: Ideal for visual donning and doffing across all activity levels.
- Flexible applications: The Suction Lanyard Drop-In works seamlessly with 3D-printed sockets or with our Tooling Dummy for thermoformed or laminated drop-in sockets.

C12S | Suction Lanyard

AK U.S. Patent No. 11,517,455

- Simple Donning and Doffing like a typical lanyard.
- Seals the distal end of the socket to create a suction socket.
- Increased comfort, reduced pistoning.



Description	Part Number
Suction Lanyard	C12S
Suction Lanyard Drop-In	C12SD
Suction Lanyard Straps	C12LS
Suction Lanyard Drop-In Tooling Dummy	C12DD

Drop-In version will be available for 3D printing and traditional fabrication methods.

Locking Lanyard

CD117L | Easy-Off Locking Lanyard

AK

2nd Generation, Robust Lever Design / Push Button, lanyard lock

- Easy donning and doffing with lever release
- Water-resistant
- Airtight "suction" with the safety and security of a pin



CD103L | Air-Lock Locking Lanyard



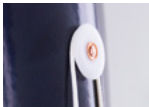
AK

Push Button Design, lanyard lock

- Suction allows for less traction on the limb for increased comfort and decreased liner wear
- Expulsion valve or suspension sleeve are not needed to maintain suction in most cases
- Water-resistant



One pin is included with the locking lanyard locks

	Description	Specifications	Code
	5 Degree AK Connector	Capable of up to 3.81 cm (1.5") of Offset with 5 degrees of flexion angle.	CD115CF5
	Locking Lanyard Pin	350 lbs capacity, 4.19 cm (1.65") long. Includes cord and spacers.	CD118P
	Lanyard Pinch Disk	Holds Lanyard cord to side of socket.	CD118PD

Grommet Lock

Designed with pediatric patients in mind, the Grommet Lock is simple, lightweight, and durable for use with upper and lower extremity. Just like our adult locks, it has multiple connector options for fabrication of a lower extremity prosthetic.

CD104 | Grommet Lock

PED

- Pediatric only
- Lightweight, durable plastic
- Water-resistant
- Can be modified for minimum clearance
- Can be used in upper and lower extremity prosthetics
- Three thread options for any liner type (10 mm, 6 mm, $\frac{1}{4} \times 20$)
- Weight limit of 100 lbs



Pins are now sold separately and come in a two pack.



CD104P10
10 mm Pin



CD104P6
6 mm Pin



CD104PQ
 $\frac{1}{4} \times 20$ Pin



CD104P6H
6 mm Pin

Connectors

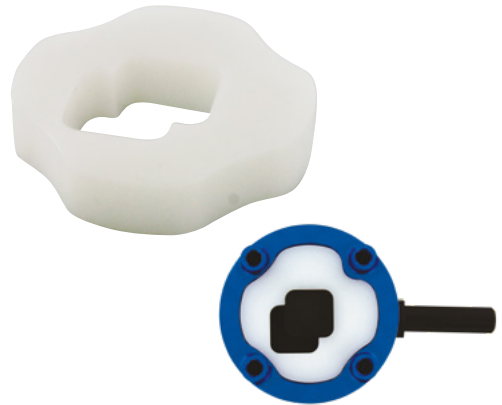
CD103AF | Alignable Connector

Up to 1.52 cm (0.6") of offset, 35 g. Ideal for use with Air-Lock and Easy Off Locks. Can be glued to the lock in any offset position for fabrication into the socket, or keys directly onto locks when used with inserts. Eliminates need for offset components. For laminations or thermoforming. 350 lb weight limit.



CD103MDI | Multi-Direction Insert

Up to 0.83 cm (0.33") offset in two directions. Installed into connector to allow connector to be keyed onto bottom of lock in centered position or offset in two directions. For laminations or thermoforming. Use with Alignable Connector or One-Shot Connector.



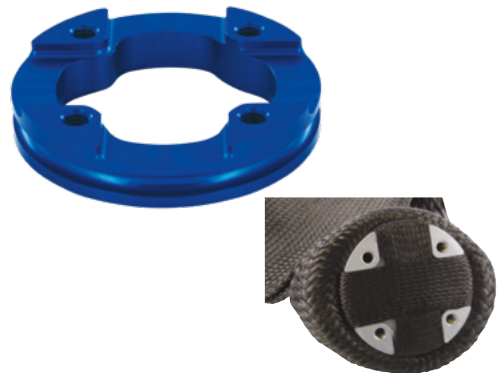
CD103SDI | Single-Direction Insert

Up to 0.83 cm (0.33") of offset in one direction. Installed into connector to allow connector to be keyed onto bottom of lock in centered position or offset in one direction. For laminations or thermoforming. Use with Alignable Connector or One-Shot Connector.



CD111 | One-Shot Connector

Up to 1.52 cm (0.6") offset, 44 g. Connector with tie off ring for easier lay-ups. Lower profile than Alignable Connector. Can be glued to lock in desired location or keyed onto lock using inserts. For laminating only. 350 lb weight limit.



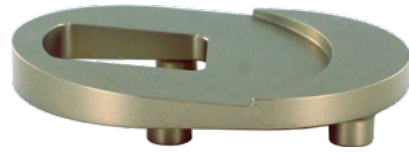
C53TS | Offset 3 Prong

Greater Offset, Strong bendable arms for adjustability. Anatomical knee center positioning for long amputations. 265 lb. weight limit.



CD115CF5 | 5 Degree AK Connector

Capable of up to 3.81 cm (1.5") of offset with 5 degrees of flexion angle. Connectors primarily use is with Lanyard Pin (CD118P) lanyard locks (CD103L, CD117L) can also be used with other Coyote® locks or the Integrator. Eliminates the need for offset components. For lamination or thermoforming. 265 lb. weight limit.



CD119SC | Test Socket Connector

Economical, cost effective, easy way to glue on connector designed specifically for Vivac check sockets. Connects to standard four hole componentry with our new high strength bridging design. Bonds well with Coyote Quik Adhesive. 1.76 cm (11/16") height, 6.98 cm (2 3/4") diameter, reusable.



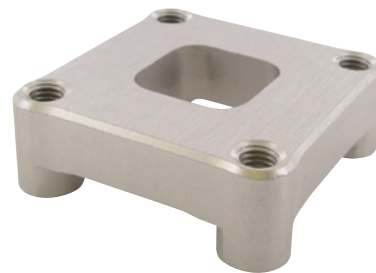
CD106 | Alignment Coupler

Offset for ML and AP of 1.62 cm (0.64"). Easily installs on four hole connector. Easy to adjust with 3 mm wrench. For fitting purposes only. 265 lb weight limit.



CD103PFF | Pediatric Fast Four Connector

Pediatric four-hole connector that keys directly onto the center of the lock for easy and fast fabrication. Used with Grommet Lock, Small Air-Lock or Medium Air-Lock. For laminations or thermoforming. 100 lb weight limit.



CD103PAF | Pediatric Alignable Connector

Used with Grommet Lock, Small Air-Lock or Medium Air-Lock. Laminating or thermoforming. This model can be used to offset the connector from the bottom of the pin in virtually any location by up to 0.63 cm (0.25"). 100 lb weight limit.



Proximal Lock

Simply easier. Designed to control rotation and be more user-friendly, the Proximal Lock attaches over a larger area, which distributes weight more evenly. The adhesive included with each lock is flexible even after it sets, making donning simpler.

- ZERO CLEARANCE lock
- Controls rotation
- Flexible attachment rolls on easier
- Can be used with seal band liners
- Adhesive included with each lock
- Use with your choice of distal adapters
- Ideal for long limbs with minimal clearance
- Larger attachment distributes more tension
- Bills like a distal pin lock system (L5671)

The Proximal Lock includes a reinforcement strap for extra reinforcement, less friction and repair.



CD116 | Proximal Lock

AK BK AE BE PED

Patent No. 6666894, 7431738, 7077868. Other patents pending.

Includes:

- liner attachment
- lock
- Fabrication dummy
- Glue form
- Adhesive.



CD116XS | Extra Strap Kit

For additional liners. Includes strap and liner attachment.



CD116SA | Silicone Adhesive

Additional adhesive if needed for Proximal Lock. A tube is included with each lock.

Summit™ Lock

Specifically for long limbs, the Summit™ Lock is designed to control rotation and requires zero clearance! There's no need to purchase a locking liner and you can use any socket adapter. CD101 can be retrofitted.

- Liner attachment shape makes the liner
- simple to roll on
- Easy to cover cosmetically
- Ergonomic tab feeds easily into lock

Liner attachment is applied with "Coyote Quik Glue" or a 5 minute epoxy.
Do not use silicone based adhesive.



CD101 | Summit Lock

AK BK AE BE PED

Base Length 4.44 cm (1.75")

Patent No. 6666894



CD102 | LowPro Summit™ Lock

AK BK AE BE PED

Base Length 6.35 cm (2.5")

Patent No. 6666894



CDDMA51 | Dispenser 50cc cartridge

Dispenser for CD4150 adhesive.
Easy to control flow, light-weight.



CD401 | 6-Pack Extra Mix Tips

For 50 cc cartridge

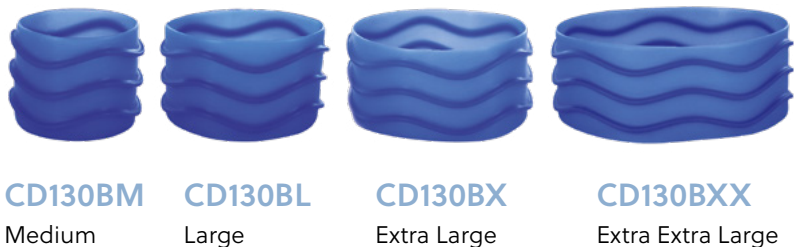
CD402 | 20-Pack Extra Mix Tips

For 50 cc cartridge

Wave Suction Band

The Coyote Wave Suction Band comes in multiple sizes.

- The Suction Band helps create dual suspension in combination with our Proximal, Summit and Low-Pro Locks.
- The airtight suspension produces a more intimate fit with added security.
- The Push Button Valve is recommended to relieve suction when donning and doffing.
- Silicone adhesive is included.



Wave Suction Band sizes

Size	Circumference	Width	Thickness	Part Number
Medium	23–30 cm	7.62 cm	4 mm	CD130BM
Large	30–38 cm	7.62 cm	4 mm	CD130BL
Extra Large	38–48 cm	7.62 cm	4 mm	CD130BX
Extra Extra Large	48–62 cm	7.62 cm	4 mm	CD130BXX

The sizes are guidelines and can vary depending on the patient. Smaller sizes are more snug.

Valves

Coyote's auto expulsion valves are easy to install in new sockets with fabrication tooling or retrofit. The built-in auto expulsion quietly expels air all day with no fuss and features a higher "crack" pressure than most valves, which helps to create a higher level of hypobaric suspension.



CD105 | CQL™ Auto Expulsion Valve

Height: 11 mm. Patent pending.

- Easy to clean and retrofit
- Quiet expulsion
- Low profile
- Includes a filter to block debris



CD103BV | Air-Lock Push Button Valve

An aftermarket addition that can be retrofit on all Air-Locks. Sold Separately.

CD103WH | Lock Wrench

Makes maintenance easy.



Air-Lock Push Button Valve

Increase suction suspension even more with the new air expulsion valve release button for all Coyote Air-Locks.

- Air expulsion built into the release button.
- Quiet expulsion.
- Increases negative pressure in the socket.



All Air-Locks can be easily retrofit. Sold Separately.



Quik Glue Adhesive

Great for any situation when you need something glued quickly and easily.
Both Adhesives ship non-hazardous and are safe with no odor.

White: Ideal Multi-Purpose Adhesive

CD4220

- Very quick set with no sag
- 30 Second
- 220 cc cartridge.
- Dispenser required
- includes 1 mix tip.

CD4150

50 cc cartridge

30 Second set up time
2 minute full cure time



Tan: More Work Time

CD4350

- 60 second with no sag
- Is solid when cured
- Bonds well to fabric, plastic and metal
- Easy to smooth
- 220 cc cartridge.
- Dispenser required.
- includes 1 mix tip.

CD4350

50 cc cartridge

60 Second set up time
3 minute full cure time



Black: Stays Flexible when Cured

CD4220S

- Longer, 90 second set time with no sag
- Stays flexible when cured
- Bonds well to fabric, plastic and metal
- Easy to smooth
- 220 cc cartridge.
- Dispenser required.
- includes 1 mix tip.

CD4250

50 cc cartridge

90 Second set up time
7 minute full cure time

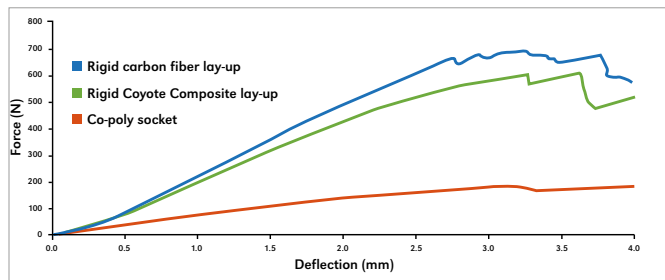


*Recommend purchasing additional tips - Tips must be replaced prior to each use.

Coyote Composite

A great alternative to itchy, expensive carbon fiber braid! Coyote Composite, is made from basalt filament, a safe, tough material for composite sockets and AFOs. Also relatively easy to cut and finish compared to other materials.

- Extremely durable
- Resistant to cracking
- Less itch than carbon
- Non-carcinogenic and non-toxic
- Strong and lightweight
- Finishes smooth, with superior resin saturation
- Unique dampening characteristics
- Less expensive



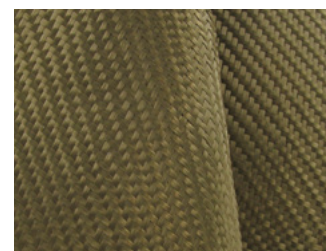
BRAID

Our proprietary braid was designed to be used in equivalent amounts to carbon. Coyote Composite is more flexible than carbon (we consider this to be an advantage), but if you need to match the rigidity of a carbon socket, use additional layers of stockinette and/or carbon tape.



FABRIC

Coyote Composite fabric sheeting can be used for reinforcement layers of heavy duty sockets and/or AFOs. The material is thin and lightweight which allows for greater flexibility in adding the ideal amount of reinforcement.



ORDERING OPTIONS

		Type	Size	Length
Braid	CD	B	3"	10'
	CD	B	3"	20'
	CD	B	3"	82'
	CD	B	4"	10'
	CD	B	4"	20'
	CD	B	4"	82'
	CD	B	6"	10'
	CD	B	6"	20'
	CD	B	6"	82'
	CD	B	7"	10'
	CD	B	7"	20'
	CD	B	7"	82'
	CD	B	8"	10'
	CD	B	8"	20'
	CD	B	8"	82'
	CD	B	10"	10'
	CD	B	10"	20'
	CD	B	10"	82'

		Type	TPI*	Length
Fabric	CD	F	350	3'
	Fabric available in 0.17 mm Thickness. Has a Bi-directional weave. *TPI: threads per inch.			



Composite on outside of lay-up



Composite on inside of lay-up

Cyclone™ Bike Foot



The Coyote Cyclone™ Bike Foot (FB1) was designed for K3-K4 level ambulators who desire a light weight, durable, and rigid foot. It is designed to give optimal power stroke, fit, and alignment for cycling.

The Cyclone™ Bike Foot was designed to minimize foot weight without compromising durability. While pedaling, the Cyclone's™ short foot length increases pedal stroke efficiency giving unmatched energy transfer, eliminates energy lost to deflection caused by the foot shell and shoe flex, and unnecessary weight. Can be used with two or three hole cleats.

FB1 | Cyclone™ Bike Foot

AK BK

Patent Pending

- Light Weight
- Durable
- Rigid
- Optimal

Power Stroke, Fit, & Alignment

