

PARTS IN THIS PACKAGE



A. Small Pediatric AFO Strut with foam backing.

Manufactured by



419 N. Curtis Rd., Boise, ID 83709
(208) 429-0026
www.coyotedesign.com

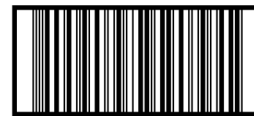
Coyote
Prosthetics
& Orthotics

CD205PS Small Pediatric AFO Strut

Weight rating up to 100 lbs.

MADE IN USA

External Prosthetic Components



00811576021579



CD205PS.RevA.10022018



EC REP

Advena Limited
Tower Business Centre
2nd Flr, Tower Street
Swatar, BKR 4013
Malta

Placing and attaching Strut

Fabrication sheet of Coyote Designs Small Pediatric AFO Strut



1. Mark your ankle centers.



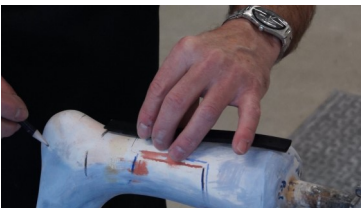
2. Split the difference between the two ankle centers and put the base of the strut at midline with the medial and at the peak of the proximal on the lateral.



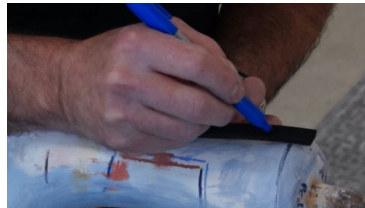
3. Figure out the curve of the strut and how it best fits on the cast.



4. Determine where you want your calf band to be.



5. Place the base of the strut where you have the distal midline mark.



6. Mark your strut just below the calf band height where you want to cut the strut.



7. Cut the strut on your mark. Cut it with a bandsaw, scissors or a hot knife.



8. Find a line of progression on the posterior of the cast. Center the strut in best position.



9. Mark your distal and your proximal. Put some dashes in for the width.



10. This will give you an idea of how the strut will look on the cast.



11. On the cast mark out your trimlines. Stay above the midline of the ankle so the ankle can be padded.

Pulling Plastic and Shaping AFO



12. Pull vacuum nylon over your cast to wick the plastic.



13. The strut has perforated holes going through it and the foam to help the strut stand off the cast a little bit giving it a real nice draw on the plastic.



14. The strut comes with double stick tape on it. You can use the double stick to mount it. You can also add some contact cement to make sure it doesn't move. Run a line of contact cement down the cast where you want the strut to sit.

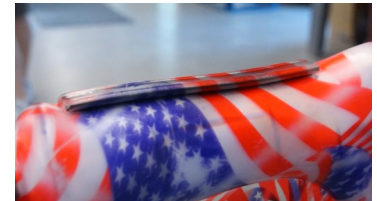


15. The strut will be raised just up off of the cast a little bit with the foam backing.

16. 5/32 or 1/8 Polypropylene works well with this because it is a nice ridged plastic.



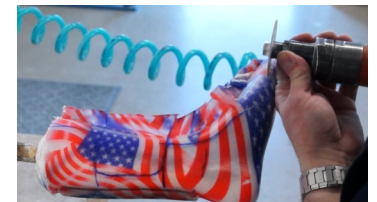
17. Pull the plastic over the cast making sure the plastic pulls around the strut.



18. Cut excess plastic off the AFO. Let it cool off and trim it out.



19. Mark up the trimlines of AFO. Start with conservative trimlines on posterior of brace. You can trim away more plastic to make the brace more flexible depending on patients needs.

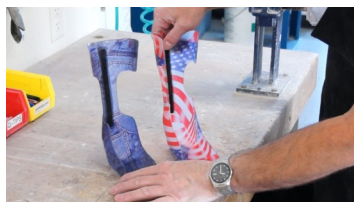


20. Cut brace off cast.

Adjusting Rod for Patient



21. Sand and smooth your edges.



22. The rigidity of this AFO is based on the thickness and types of plastics used. The rigidity is also based on the amount of plastic left in the strut area on the posterior of the AFO.

23. 5/32 or 1/8 Polypropylene work well with the strut. With 1/8 inch you may not be able to trim out as much next to the strut.

Need assistance?

Call us, we would love to help.

(208) 429-0026

CAUTION

1. Construction instructions are helpful hints on how to work with Coyote Design's Dynamic AFO product. Actual fabrication is the responsibility of the technician and/or practitioner.

*A 90 day limited warranty applies to the **Small Pediatric AFO Strut (CD205PS)** go to www.coyotedesign.com for details.*